



CORIAN®  
ENDURA™

HIGH-PERFORMANCE  
PORCELAIN  
ULTIMATE DURABILITY

CORIAN®  
ENDURA™

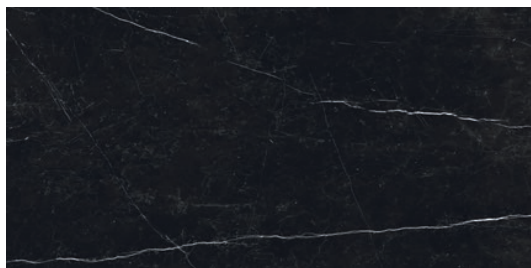


**THE HARDWEARING  
AND HIGHLY FUNCTIONAL  
AESTHETICS OF CORIAN®  
ENDURA™ REPRESENT THE  
ULTIMATE IN DURABILITY.**

This high-performance porcelain offers top-of-the-line durability, superior resistance to heat, scratches and stains, and UV stability so you can take it outside.

Made of 100% natural minerals, this innovative material is uniquely engineered through compression at high temperature in a similar way to how nature forges a diamond. With its on-trend designs, the impressive features of Corian® Endura™ make it a great companion for surface solutions within your food service, hospitality or commercial space.

Thanks to its solid structure, it is able to withstand constant wear and tear while maintaining its exquisite composition and color. This surface solution is ideally suited to meet the exacting demands of dining spaces, kitchens, and high-traffic areas. Corian® Endura™ is the perfect companion for your commercial designs.



BLACK MARQUIS



URBAN CEMENT



TABLE TOP - BLACK MARQUIS  
INTERIOR WALL - URBAN CEMENT





BAR COUNTER - ANCIENT MARBLE  
FEATURE WALL - CINDER CEMENT

## SPECIFY WITH CONFIDENCE 25 YEAR PRODUCT WARRANTY



**SCRATCH  
RESISTANT**

**Highly Scratch Resistant**  
Great for High Traffic  
Areas



**HEAT  
RESISTANT**

**Turn Up the Heat**  
Resistant to High  
Temperature Cooking



**UV  
RESISTANT**

**UV Resistant**  
Perfect for Outdoor  
Spaces



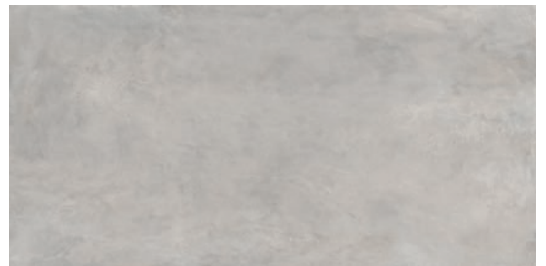
**NON-POROUS AND  
EASY-TO-CLEAN**

**Stain Resistant**  
Sip Red Wine without  
Worry

**Easy to Disinfect**  
Non-Porous Surface gives  
Germs no Place to Hide



ANCIENT MARBLE



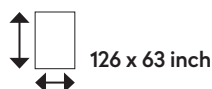
CINDER CEMENT

## CORIAN® ENDURA™ COLOR PORTFOLIO

All eyes will be on the surface thanks to the timeless color offering from Corian® Endura™. The color range is composed of a collection of tones and patterns that pair seamlessly with a variety of interior moods.

Designed to complement the aesthetic of Corian® Solid Surface and Corian® Quartz, the Corian® Endura™ range offers a versatile collection of striking colors and patterns to fit any number of interior design themes.

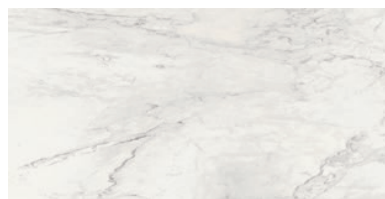
### PRODUCT DIMENSIONS AND SPECIFICATIONS



COLOR	SATIN	MINERAL	12mm	20mm
DIAMOND WHITE	X		X	X
PITCH BLACK	X		X	X
ALABASTER CEMENT	X		X	X
CINDER CEMENT	X		X	X
URBAN CEMENT		X	X	X
RUSTICA METAL	X		X	X
DEEP METAL	X		X	X
SMOKY MARBLE	X		X	X
BLACK MARQUIS	X		X	X
ANCIENT MARBLE		X	X	X
COOL MARBLE	X		X	X

**SATIN:** Beautiful for any work surface or environment, the Satin finish has a light sheen with low reflectance that delivers a color enhancing richness.

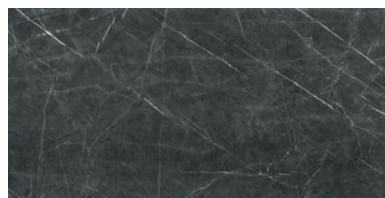
**MINERAL:** A finely textured surface gives the Mineral finish a natural look that is earthy and slightly less honed



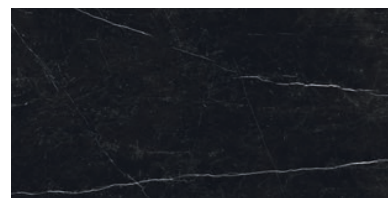
ANCIENT MARBLE



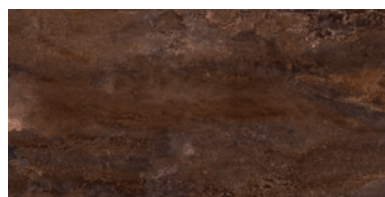
COOL MARBLE



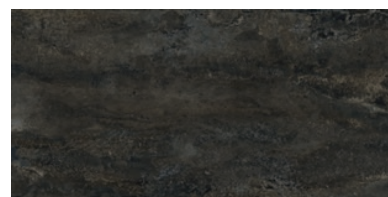
SMOKY MARBLE



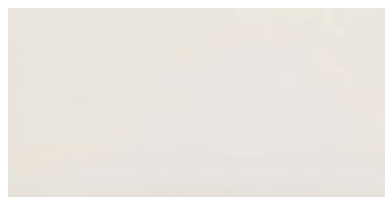
BLACK MARQUIS



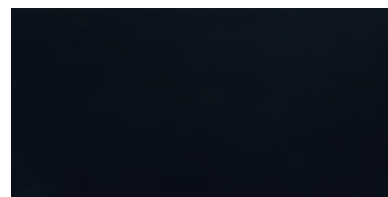
RUSTICA METAL



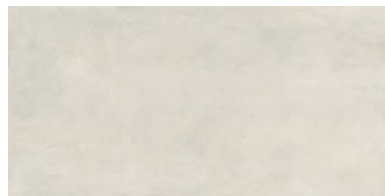
DEEP METAL



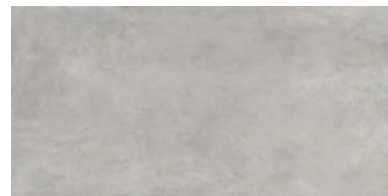
DIAMOND WHITE



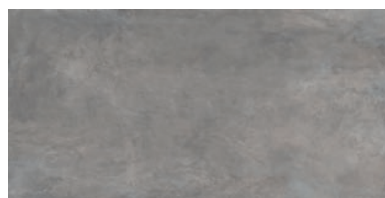
PITCH BLACK



ALABASTER CEMENT



CINDER CEMENT



URBAN CEMENT

To know more about Corian® Endura™ and Corian® Design: [corianendura.com](http://corianendura.com) [coriandesign.com](http://coriandesign.com) [corian.com](http://corian.com)

[Linkedin.com/company/corian-design](https://www.linkedin.com/company/corian-design)

[Facebook.com/CorianDesign](https://www.facebook.com/CorianDesign)

[Instagram.com/CorianDesign](https://www.instagram.com/CorianDesign)



Make Your Space™

Always defer to the care and maintenance guidelines.

Printed representation of colors may vary from actual samples. Please view actual sample before purchasing. For more information, visit [corianendura.com](http://corianendura.com)

Copyright © 2020 DuPont de Nemours and affiliates. The Corian® Endura™ Logo, Corian®, and Make Your Space™ are trademarks owned by affiliates of DuPont de Nemours, Inc. unless otherwise noted. All rights reserved.