

**Futrus<sup>®</sup> Healthcare Casework**

- Corian<sup>®</sup> Casework System
- Hybrid Casework System
- Door System
- Decentralized Nurse Stations
- Modular Greeter Stations

**Futrus<sup>®</sup> Wall Systems**

- Halo Wall Protection
- Modular Wall Panels
- Ascend Wall System

**Futrus<sup>®</sup> Headwall Systems**

- Concealed Headwall
- Compact Headwall
- Slim Headwall
- Surface Headwall

**Futrus<sup>®</sup> Patient Room Furniture**

- Universal Overbed Tables
- Contour Overbed Tables
- Corian<sup>®</sup> Bedside Cabinets
- Hybrid Bedside Cabinets

**Futrus<sup>®</sup> Commercial Casework**

- Corian<sup>®</sup> Casework System
- Hybrid Casework System

**Futrus<sup>®</sup> Furniture Solutions**

- Terrazzo Collection
- Adaptz Tables & Benches
- Occasional Tables
- Cafe Tables

**Shower Systems/Bases**

**Corian<sup>®</sup> & Quartz Trough Sinks**

**Sink Modules/Sinks**

*For additional information please visit [futrus.com](http://futrus.com)*



# FUTRUS® HEALTHCARE CASEWORK SYSTEM



The award-winning Futrus® Casework System is designed for maximum infection control, durability and design flexibility.

All interior and exterior surfaces are made from seamless, bleach cleanable Corian®, which is GREENGUARD® certified to resist microbial growth to help reduce HAIs. Corian® surfaces also resist chipping, peeling, scratching and staining and combine with Futrus® patented construction techniques for unrivaled durability.

This unique, modular system is fully adaptable by size, configuration, color and hardware to complement any space or design scheme. Features include soft close doors and drawers. Ideal for operating rooms, cath labs, MRI suites, decontamination rooms, cancer centers and areas where infection control is vital.



## STANDARD FEATURES

- Patented structural construction
- Doors, drawers and case built with Corian® solid surface
- Installation: Horizontal rail mount, wall mounted or traditionally floor mounted on platforms
- Fabricated in a matte finish
- Door Style: Standard Square with soft close hinges
- Drawer Boxes: Corian®; powder coated metal or stainless steel with tab or arch pulls; soft close drawer slides
- Shelves: Adjustable shelves made of Corian®; heavy duty shelf clips
- Futrus® 5 year warranty, Corian® 10 year warranty

## CUSTOMIZATIONS

- Available in all Corian® colors
- Optional features: Drawer locks, selection of hardware
- Cabinet interiors: coved, sealed
- Radius corners and edges
- Non-ferromagnetic hardware

## COLORS

Standard Corian® Colors:  
Cameo White, Glacier White, Bisque, Bone, Vanilla  
or choice of any Corian® colors

## INTEGRATES WITH OTHER SOLUTIONS

Futrus® Wall System  
Custom Futrus® Sinks/Corian® Sinks  
Futrus® Sink Modules  
Cove Splashes

## FUTRUS® DOOR DETAILS

Solid Corian® Doors available up to 96"H

Door Fronts:	Door Interiors:
Standard   Style 132	Square   Style 133
Cove Edge   Style 150	Coved   Style 155
Glass Insert   Style 140	

For complete product specifications, visit [futrus.com](http://futrus.com).

All Corian® solid surface colors and thicknesses carry the highest "interior finishes" rating. Corian® is:  
- Class I (Class A) fire rated  
- GREENGUARD Gold for children and schools  
- GREENGUARD Indoor Air Quality Certified®  
- GREENGUARD listed for Microbial resistance

**FUTRUS®**  
SOLUTIONS WITH CORIAN® DESIGN

[futrus.com](http://futrus.com)  
[info@futrus.com](mailto:info@futrus.com)  
1.877.FUTRUS1 (388.7871)



FUTRUS<sup>®</sup> HYBRID CASEWORK SYSTEM

# FUTRUS® HYBRID CASEWORK SYSTEM



The Futrus® Hybrid Casework System is designed to be more hygienic and durable than traditional casework.

The doors, drawers and work surfaces are made from seamless, bleach cleanable Corian®, which is GREENGUARD® certified to resist microbial growth to help reduce HAIs. Corian® surfaces also resist chipping, peeling, scratching and staining and combine with Futrus® patented construction techniques for unrivaled durability. The thermofoil casing is also highly durable and bleach cleanable.

This unique, modular system is fully adaptable by size, configuration color, hardware and materials to complement any space or design scheme. Features include soft close doors and drawers. Ideal for use in general patient rooms, exam rooms and long-term care.



## STANDARD FEATURES

- Doors and drawers built with Corian®
- Case made with seamless thermofoil
- Finished Ends & Interiors: Thermofoil or Corian®
- Installation: Wall mounted with z-clips or traditionally floor mounted on platforms
- Door/Drawer Colors: Standard in Corian® Cameo White and Glacier White in a matte finish
- Case Colors: Standard in thermofoil woodgrains and corresponding whites to match doors/drawers
- Shelves: Half depth adjustable shelves made of Corian®; Heavy duty shelf clips
- Drawer Boxes: Corian®; powder coated metal or dovetail
- Futrus® 5 year warranty, Corian® 10 year warranty

## CUSTOMIZATIONS

- Available in all Corian® colors
- Optional features: Drawer locks, selection of hardware
- Radius corners and edges
- Non-ferromagnetic hardware

## COLORS

Standard Corian® Colors:

Cameo White, Glacier White, Bisque, Bone, Vanilla or choice of additional Corian® colors

## INTEGRATES WITH OTHER SOLUTIONS

Futrus® Wall System  
Custom Futrus® Sinks/Corian® Sinks  
Futrus® Sink Modules  
Cove Splashes

## FUTRUS® DOOR DETAILS

Solid Corian® Doors available up to 96"H

Door Fronts:

Standard | Style 132

Cove Edge | Style 150

Glass Insert | Style 140

Door Interiors:

Square | Style 133

Coved | Style 155

For complete product specifications, visit [futrus.com](http://futrus.com).

All Corian® solid surface colors and thicknesses carry the highest "interior finishes" rating. Corian® is:

- Class I (Class A) fire rated
- GREENGUARD Gold for children and schools
- GREENGUARD Indoor Air Quality Certified®
- GREENGUARD listed for Microbial resistance

**FUTRUS**®  
SOLUTIONS WITH CORIAN® DESIGN

[futrus.com](http://futrus.com)  
[info@futrus.com](mailto:info@futrus.com)  
1.877.FUTRUS1 (388.7871)



FUTRUS<sup>®</sup> DOOR SYSTEM

designed with

**CORIAN**<sup>®</sup>  
SOLID SURFACE

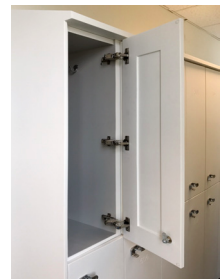
# FUTRUS® DOOR SYSTEM



Designed to provide a far more durable and low maintenance alternative to traditional doors made of wood, laminate or stainless steel.

The doors are made from Corian® which is seamless, bleach cleanable and GREENGUARD® certified to resist the growth mold and bacteria, making them ideal for healthcare and commercial environments. Corian® surfaces also resist chipping, peeling, scratching and staining for greater life cycle. Connects to all Futrus® Casework Systems or is specifiable as a separate door system to elevate traditional millwork.

Features patented embedded connections for maximum strength attachment and optional internal coved edges for greater cleaning efficiency. Available in standard or custom sizes, door pulls, surface finishes and colors to complement any design scheme.



## STANDARD FEATURES

- Made with 3/4" Corian® solid surface
- Available up to 96"H
- Front Profiles: Standard, Coved Edge or Glass Insert
- Door Back Profiles: Standard or Infection Control (Coved)
- Hinge: Stainless, Soft Close, ANSI or MRI Compliant non-ferrous
- Fastening technology provides for traditional case construction connections (particle board, melamine or plywood)
- Pulls: Tabs, Steel C-pull, integral
- Drawers: Constructed with all Corian®, power coated metal box or stainless
- Futrus® 5 year warranty, Corian® 10 year warranty

## CUSTOMIZATIONS

- Customizable sizes available
- Available in all Corian® colors

## FUTRUS® DOOR STYLES

Door Fronts:

Standard | Style 132

Cove Edge | Style 150

Glass Insert | Style 140

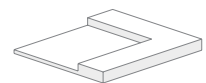
Door Interiors:

Square | Style 133

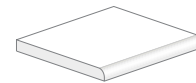
Coved | Style 155



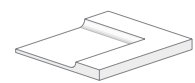
Standard Profile | Style 132



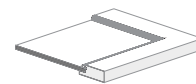
Standard Square Profile | Style 133



Cove Edge Profile | Style 150



Infection Control Profile | Style 155



Glass Insert | Style 140

For complete product specifications, visit [futrus.com](http://futrus.com).

All Corian® solid surface colors and thicknesses carry the highest "interior finishes" rating. Corian® is:

- Class I (Class A) fire rated
- GREENGUARD Gold for children and schools
- GREENGUARD Indoor Air Quality Certified®
- GREENGUARD listed for Microbial resistance

**FUTRUS®**  
SOLUTIONS WITH CORIAN® DESIGN

[futrus.com](http://futrus.com)  
[info@futrus.com](mailto:info@futrus.com)  
1.877.FUTRUS1 (388.7871)



FUTRUS<sup>®</sup> NURSE STATIONS

designed with

**CORIAN**<sup>®</sup>  
SOLID SURFACE

# FUTRUS® NURSE STATIONS



Our modular Nurse Stations provide complete design flexibility and maximum hygiene. Featuring patented construction techniques for even greater durability and long-term value. Customizable to suit patient rooms, hallways or centralized locations.

All exterior surfaces are made from seamless, bleach cleanable Corian®, which is GREENGUARD® certified to resist microbial growth to help reduce HAIs. Corian® surfaces also resist chipping, peeling, scratching and staining and combine with Futrus® patented construction techniques for unrivaled durability.

This unique, modular system is fully adaptable by size, configuration, color and hardware to complement any space or design scheme. Features include soft close doors and drawers.



## STANDARD FEATURES

- Patented structural construction
- Doors, drawers and case built with Corian® solid surface
- Installation: Horizontal rail mount, wall mounted or traditionally floor mounted on platforms
- Fabricated in a matte finish
- Door Style: Standard Square with soft close hinges
- Drawer Boxes: Corian®; power coated metal or stainless steel with tab or arch pulls; soft close drawer slides
- Shelves: Adjustable shelves made of Corian®; heavy duty shelf clips
- Futrus® 5 year warranty, Corian® 10 year warranty

## CUSTOMIZATIONS

- Available in all Corian® colors
- Optional features: Drawer locks, selection of hardware
- Backsplash or wall splash
- Radius corners and edges

## COLORS

Standard Corian® Colors:  
Cameo White, Glacier White, Bisque, Bone, Vanilla  
or choice of any Corian® colors

## INTEGRATES WITH OTHER SOLUTIONS

Futrus® Wall System  
Custom Futrus® Sinks/Corian® Sinks  
Futrus® Sink Modules  
Cove Splashes

## FUTRUS® DOOR DETAILS

Solid Corian® Doors available up to 96"H

Door Fronts:

Standard | Style 132

Cove Edge | Style 150

Glass Insert | Style 140

Door Interiors:

Square | Style 133

Coved | Style 155

For complete product specifications, visit [futrus.com](http://futrus.com).

All Corian® solid surface colors and thicknesses carry the highest "interior finishes" rating. Corian® is:

- Class I (Class A) fire rated
- GREENGUARD Gold for children and schools
- GREENGUARD Indoor Air Quality Certified®
- GREENGUARD listed for Microbial resistance

**FUTRUS®**  
SOLUTIONS WITH CORIAN® DESIGN

[futrus.com](http://futrus.com)  
[info@futrus.com](mailto:info@futrus.com)  
1.877.FUTRUS1 (388.7871)



# FUTRUS® RECEPTION STATIONS



Our modular Nurse Stations provide complete design flexibility and maximum hygiene. Featuring patented construction techniques for even greater durability and long-term value. Customizable to suit patient rooms, hallways or centralized locations.

All exterior surfaces are made from seamless, bleach cleanable Corian®, which is GREENGUARD® certified to resist microbial growth to help reduce HAIs. Corian® surfaces also resist chipping, peeling, scratching and staining and combine with Futrus® patented construction techniques for unrivaled durability.

This unique, modular system is fully adaptable by size, configuration, color and hardware to complement any space or design scheme. Features include soft close doors and drawers.



## STANDARD FEATURES

- Patented structural construction
- Doors, drawers and case built with Corian® solid surface
- Installation: Horizontal rail mount, wall mounted or traditionally floor mounted on platforms
- Fabricated in a matte finish
- Door Style: Standard Square with soft close hinges
- Drawer Boxes: Corian®; power coated metal or stainless steel with tab or arch pulls; soft close drawer slides
- Shelves: Adjustable shelves made of Corian®; heavy duty shelf clips
- Futrus® 5 year warranty, Corian® 10 year warranty

## CUSTOMIZATIONS

- Available in all Corian® colors
- Optional features: Drawer locks, selection of hardware
- Backsplash or wall splash
- Radius corners and edges

## FUTRUS® DOOR DETAILS

Solid Corian® Doors available up to 96" H

Door Fronts:

Standard | Style 132

Cove Edge | Style 150

Glass Insert | Style 140

Door Interiors:

Square | Style 133

Coved | Style 155

## COLORS

Standard Corian® Colors:

Cameo White, Glacier White, Bisque, Bone, Vanilla or choice of any Corian® colors

Standard Hybrid Colors:

Laminate or Thermofoil in Cherry, Maple or Walnut

For complete product specifications, visit [futrus.com](http://futrus.com).

All Corian® solid surface colors and thicknesses carry the highest "interior finishes" rating. Corian® is:

- Class I (Class A) fire rated
- GREENGUARD Gold for children and schools
- GREENGUARD Indoor Air Quality Certified®
- GREENGUARD listed for Microbial resistance

**FUTRUS®**  
SOLUTIONS WITH CORIAN® DESIGN

[futrus.com](http://futrus.com)  
[info@futrus.com](mailto:info@futrus.com)  
1.877.FUTRUS1 (388.7871)



FUTRUS<sup>®</sup> HALO WALL PROTECTION SYSTEM

designed with

**CORIAN**<sup>®</sup>  
SOLID SURFACE

# FUTRUS® HALO WALL PROTECTION SYSTEM



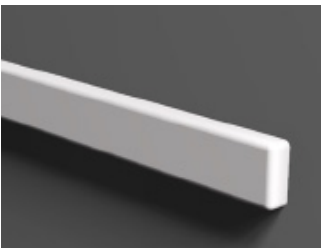
A unique, modular wall panel system, made with 100% Corian®. Designed to provide an unrivaled hygienic and impact resistant barrier of protection to any vertical area. Surfaces are non-porous, bleach cleanable, repairable and easy to maintain. Each panel is prefabricated using advanced digital technology to meet precise wall dimensions. Edge joints ensure panels fit precisely to create a virtually seamless surface with the option to hard seam.

- 100% Corian
- Virtually seamless & non-porous
- Bleach cleanable
- Impact resistant
- Resists scratching, chipping & staining
- Repairable
- Tongue & groove joints
- Standard Corian® Colors: Cameo White, Glacier White, Bone, Bisque, Vanilla, Sandstone, Linen

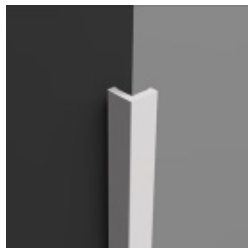
## Advantages of Futrus® Halo System vs. Traditional Installation Methods

- Laser wall templating - Ensures complete accuracy of all surface dimensions, including doorways and cutouts and minimizes material waste to support sustainability.
- Digital CNC panel production - Ensures each panel is consistently finished to the highest quality.
- Off-site pre-fabrication - Enables rapid installation to reduce downtime and lost revenue. Also reduces site disruption, debris and safety risks
- Multi-step surface finish - Provides a consistent matte finish, reducing glare and reflection.
- Lap joint edges - Allows for both soft seaming or hard seaming.

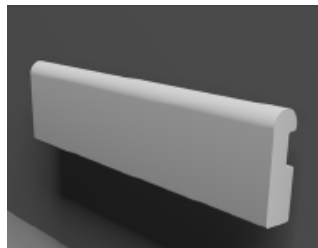
Combine the Futrus® Halo System with Futrus® Wall Accessories to create added protection, functionality and an attractive, cohesive look.



Wall Bumpers



Corner Guards



Hand Rails



Wall Bumpers with Corian® Walls

For complete product specifications, visit [futrus.com](http://futrus.com).

All Corian® solid surface colors and thicknesses carry the highest "interior finishes" rating. Corian® is:

- Class I (Class A) fire rated
- GREENGUARD Gold for children and schools
- GREENGUARD Indoor Air Quality Certified®
- GREENGUARD listed for Microbial resistance

**FUTRUS®**  
SOLUTIONS WITH CORIAN® DESIGN

[futrus.com](http://futrus.com)  
[info@futrus.com](mailto:info@futrus.com)  
1.877.FUTRUS1 (388.7871)



FUTRUS<sup>®</sup> MODULAR WALL PANEL SYSTEM

designed with

CORIAN<sup>®</sup>  
SOLID SURFACE

# FUTRUS® MODULAR WALL PANEL SYSTEM



An advanced modular wall system designed to help turn any space into the ultimate sterile, durable and easy to clean environment.

Each panel is made from seamless, bleach cleanable Corian®, which is GREENGUARD® certified to resist microbial growth to help reduce HAIs. Corian® panels also resist chipping, peeling, scratching and staining for greater life cycle. A metal back plate reinforces each panel for greater impact resistance.

Features a patented hanging system for easy panel attachment and removal and interlocking lap joint panel edges to prevent liquid penetration. Available in standard or custom panel sizes, colors and finishes to suit any wall space or design scheme. Can also incorporate services, technology, branding and wayfinding.

## STANDARD FEATURES

- Panel Depth: 1/2", 5/8", 3/4"
- Heights and widths are configurable
- Pre-located, fire rated sub-panels mount to stud-wall for easy layout and installation
- Standard Corian® Colors: Cameo White, Glacier White, Bisque, Bone, Vanilla
- Matte finish
- Futrus® 5-year limited, Corian® 10-year limited warranty

## CUSTOMIZATIONS

- Available in any Corian® color & pattern; Exclusive wood grain patterns and customizable print options also available
- Lighting: Panels can be configured to accommodate surface mounted lighting; offered in a variety of designs or customized for wayfinding, theming or branding

For complete product specifications, visit [futrus.com](http://futrus.com).

All Corian® solid surface colors and thicknesses carry the highest "interior finishes" rating, Class I (Class A) of the principle USA building codes.

- Class I (Class A) fire rated
- GREENGUARD Gold for children and schools
- GREENGUARD Indoor Air Quality Certified®
- GREENGUARD listed for Microbial resistance

**FUTRUS®**  
SOLUTIONS WITH CORIAN® DESIGN

[futrus.com](http://futrus.com)  
[info@futrus.com](mailto:info@futrus.com)  
1.877.FUTRUS1 (388.7871)



FUTRUS<sup>®</sup> ASCEND WALL SYSTEM

designed with

CORIAN<sup>®</sup>  
SOLID SURFACE

# FUTRUS® ASCEND WALL SYSTEM

Designed to be the most adaptable, self supporting Corian® wall system on the market.



The Futrus® Ascend Wall System is a modular, self-supporting, half-wall designed to provide unmatched durability, hygiene and design flexibility. Featuring seamless, bleach cleanable Corian® panels which are mounted on a patented structural framing system that is just two-inches wide to maximize available space. Each panel is removable, impact resistant and can incorporate a variety of components including glass, desking, sinks and technology for added functionality. Panels can also be adapted and upgraded overtime, ensuring a truly future-proof solution.

- Corian® surfaces
- Self-supporting patented construction
- Impact resistant
- Adaptable height & length
- Bleach cleanable, seamless & nonporous
- Resists scratching, staining & chipping
- GREENGUARD certified to resist mold & bacteria growth
- Technology integration
- Quick & easy installation
- Ideal for commercial & healthcare applications
- Choice of colors & 3D patterns

## STANDARD FEATURES

- Patented construction
- ~3" overall wall thickness
- Floor attachment hardware
- Corian® Colors: Cameo White, Glacier White, Bone, Bisque, Linen, Silver Gray
- Fabricated in a matte finish
- Futrus® 5-year limited warranty, Corian® 10-year limited warranty

## STANDARD SIZES

Heights: 3', 4'

Lengths: Up to 6' sections

## CUSTOMIZATIONS

- Available in all Corian® colors
- Technology Integration: Power; Power/USB Ports
- Optional features: Integrated countertops, plexiglass, other materials
- 3D Engraving, Backlighting, Dye Sublimation or Thermoforming
- Available with laminate & thermofoil panels

For pricing, custom sizes and designs, contact Futrus®  
For complete product specifications, visit [futrus.com](http://futrus.com).

**FUTRUS®**  
SOLUTIONS WITH CORIAN® DESIGN

All Corian® solid surface colors and thicknesses carry the highest "interior finishes" rating. Corian® Is:

- Class I (Class A) fire rated
- GREENGUARD Gold for children and schools
- GREENGUARD Indoor Air Quality Certified®
- GREENGUARD listed for Microbial resistance

[futrus.com](http://futrus.com)  
[info@futrus.com](mailto:info@futrus.com)  
1.877.FUTRUS1 (388.7871)



FUTRUS<sup>®</sup> CONCEALED HEADWALL SYSTEM

designed with

CORIAN<sup>®</sup>  
SOLID SURFACE

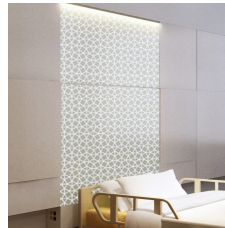
# FUTRUS® CONCEALED HEADWALL SYSTEM



Designed to help create a calming, hospitality style environment and provide ultimate design flexibility.

The services and equipment are neatly concealed behind sliding access panels with a 4" or 6" depth profile. Each modular headwall panel is made from seamless, bleach cleanable Corian®, which is GREENGUARD® certified to resist microbial growth to help reduce HAIs. Corian® surfaces also resist chipping, peeling, scratching and staining and combine with Futrus® patented construction techniques for unrivaled durability.

Features include a structural rail system for easy panel attachment or removal and lap joint panel edges to prevent liquid penetration. Fully customizable to meet any space, caregiver or patient requirement.



Integrated backlighting



Sliding access doors



Customizable storage

## STANDARD FEATURES

- Unit Size: Height starting at 78"-96" Depth starting at 4" or 6" Width starting at: 42" center section, 21" side columns
- Installed Height: 94"-96"
- Concealed Service Panel: 3½"-5½" interior shelves
- Wall Mounted on Indexed Rails
- Colors: Cameo White, Glacier White, Bone, Bisque, Vanilla, Sandstone, Linen
- Futrus® 5-year limited, Corian® 10-year limited

## CUSTOMIZATIONS

- Trim to ceiling
- Lighting: Integrated backlighting, a variety of designs or customizable design for wayfinding, theming or branding
- Colors: Available in any Corian® color & pattern; customizable dye-sublimation wood grain patterns and UV print options; Addition of thermofoil or vinyl panels also available
- Services: Each side column accommodates med gases, electrical outlets equipment rails

For complete product specifications, visit [futrus.com](http://futrus.com).

All Corian® solid surface colors and thicknesses carry the highest "interior finishes" rating. Corian® is:

- GREENGUARD Indoor Air Quality Certified®
- GREENGUARD listed for Microbial resistance

**FUTRUS®**  
SOLUTIONS WITH CORIAN® DESIGN

[futrus.com](http://futrus.com)  
[info@futrus.com](mailto:info@futrus.com)  
1.877.FUTRUS1 (388.7871)



FUTRUS<sup>®</sup> COMPACT HEADWALL SYSTEM

designed with



# FUTRUS® COMPACT HEADWALL SYSTEM



A compact headwall design that hides services from patient view, to help create a more calming environment.

The services and equipment are neatly contained within dual side recesses with a 12" profile depth. Each modular headwall panel is made from seamless, bleach cleanable Corian®, which is GREENGUARD® certified to resist microbial growth to help reduce HAIs. Corian® surfaces also resist chipping, peeling, scratching and staining and combine with Futrus® patented construction techniques for unrivaled durability.

Features include a structural rail system for easy panel attachment or removal and lap joint panel edges to prevent liquid penetration. Fully customizable to meet any space, caregiver or patient requirement.



Integrated bed bumper



Lap jointed removable panels

## STANDARD FEATURES

- Unit Height: 67" or 84" Depth: 12" Width: 42"
- Installed Height: 79" or 96"
- Side Service Panels
- Wall Mounted on Indexed Rails
- Colors: Cameo White, Glacier White, Bone, Bisque, Vanilla, Sandstone, Linen
- Futrus® 5-year limited, Corian® 10-year limited

## CUSTOMIZATIONS

- Lighting: Integrated backlighting, a variety of designs or customizable design for wayfinding, theming or branding
- Colors: Any Corian® color & pattern; Exclusive wood grain patterns and customizable dye sublimation and UV print options also available
- Services: Each side column accommodates med gases; electrical outlets; equipment rails; configurable nurse call options; services can be delivered pre-plumbed, pre-wired and pre-tested
- Locking doors can be added to restrict access to services

For complete product specifications, visit [futrus.com](http://futrus.com).

All Corian® solid surface colors and thicknesses carry the highest "interior finishes" rating. Corian® is:  
- GREENGUARD Indoor Air Quality Certified®  
- GREENGUARD listed for Microbial resistance

**FUTRUS®**  
SOLUTIONS WITH CORIAN® DESIGN

[futrus.com](http://futrus.com)  
[info@futrus.com](mailto:info@futrus.com)  
1.877.FUTRUS1 (388.7871)



FUTRUS<sup>®</sup> SLIM HEADWALL SYSTEM

designed with

CORIAN<sup>®</sup>  
SOLID SURFACE

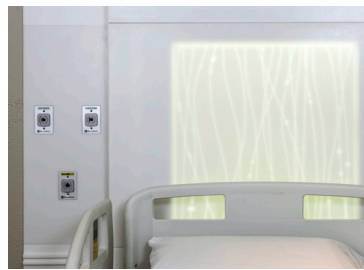
# FUTRUS® SLIM HEADWALL SYSTEM



A sleek, versatile system that allows services to be integrated into the face panels or extended side panels.

The headwall has a 3" profile depth. Each modular headwall panel is made from seamless, bleach cleanable Corian®, which is GREENGUARD® certified to resist microbial growth to help reduce HAIs. Corian® surfaces also resist chipping, peeling, scratching and staining and combine with Futrus® patented construction techniques for unrivaled durability.

Features include a structural rail system for easy panel attachment or removal and lap joint panel edges to prevent liquid penetration. Fully customizable to meet any space, caregiver or patient requirement.



Side service panels



Custom backlighting & multiple colors

## STANDARD FEATURES

- Unit Height: 67" or 84" Depth: 3" Width: 42" [center], 12" [side service panel]
- Installed Height: 79" or 96"
- Wall Mounted on Indexed Rail System
- Trim plate free med gases mounted on face panels or side service panels
- Colors: Cameo White, Glacier White, Bone, Bisque, Vanilla, Sandstone, Linen
- Futrus® 5-year limited, Corian® 10-year limited

## CUSTOMIZATIONS

- Custom sizing available for headwall and side service panels
- Any Corian® color & pattern; Exclusive wood grain patterns and customizable print options also available
- Lighting: Panels can be configured to accommodate surface mounted lighting; integrated backlighting, offered in a variety of designs or customized for wayfinding, theming or branding
- Extended Wall Side Service Panels: Individual modular wall mounted panels made of Corian® accommodate services
- Services: accommodates configurable gases, electric outlets, equipment rails, configurable nurse call options; services can be delivered pre-plumbed, pre-wired and pre-tested

For complete product specifications, visit [futrus.com](http://futrus.com).

**FUTRUS®**  
SOLUTIONS WITH CORIAN® DESIGN

All Corian® solid surface colors and thicknesses carry the highest "interior finishes" rating. Corian® is:

- GREENGUARD Indoor Air Quality Certified®
- GREENGUARD listed for Microbial resistance

[futrus.com](http://futrus.com)  
[info@futrus.com](mailto:info@futrus.com)  
1.877.FUTRUS1 (388.7871)



FUTRUS<sup>®</sup> SURFACE HEADWALL SYSTEM

designed with

**CORIAN**<sup>®</sup>  
SOLID SURFACE

# FUTRUS® SURFACE HEADWALL SYSTEM



A cost effective and dual-purpose design that functions as a headwall and wall protection.

Each modular panel has a 1" profile depth and is made from seamless, bleach cleanable Corian®, which is GREENGUARD® certified to resist microbial growth to help reduce HAIs. Corian® panels also resist chipping, peeling, scratching and denting for unrivaled durability. Existing med gas and electrical outlets can be integrated into each panel without costly reconfiguration.

Features include a structural rail system for easy panel attachment or removal and lap joint panel edges to prevent liquid penetration. Fully customizable to meet any space, caregiver or patient requirement.



Indexed rail



Seamless color transition

## STANDARD FEATURES

- Unit Height: 67" or 84" H Depth: 1" Width: up to 30" panels
- Installed Height: 79" or 96"
- Wall Mounted on Indexed Rails
- Med gases and electricals pre-cut or field cut
- Colors: Cameo White, Glacier White, Bone, Bisque, Vanilla, Sandstone, Linen
- Futrus® 5-year limited, Corian® 10-year limited

## CUSTOMIZATIONS

- Any Corian® color & pattern; Exclusive wood grain patterns and customizable print options also available
- Lighting: Panels can be configured to accommodate surface mounted lighting; integrated backlighting, offered in a variety of designs or customized for wayfinding, theming or branding
- Extended Wall Side Service Panels: Individual modular wall mounted panels made of Corian® accommodate services
- Services: each side service panel accommodates med gases; electrical outlets; equipment rails; configurable nurse call options; services can be delivered pre-plumbed, pre-wired and pre-tested

For complete product specifications, visit [futrus.com](http://futrus.com).

**FUTRUS®**  
SOLUTIONS WITH CORIAN® DESIGN

All Corian® solid surface colors and thicknesses carry the highest "interior finishes" rating. Corian® is:  
- GREENGUARD Indoor Air Quality Certified®  
- GREENGUARD listed for Microbial resistance

[futrus.com](http://futrus.com)  
[info@futrus.com](mailto:info@futrus.com)  
1.877.FUTRUS1 (388.7871)



FUTRUS<sup>®</sup> UNIVERSAL OVERBED TABLE

designed with

CORIAN<sup>®</sup>  
SOLID SURFACE

# FUTRUS® UNIVERSAL OVERBED TABLE

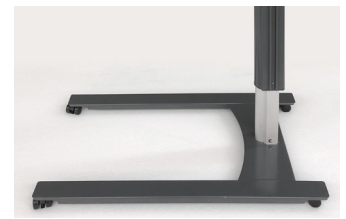


Combines maximum infection control and durability with a universally compatible base.

The Futrus® Universal Overbed Table features a seamless Corian® table top which is entirely bleach cleanable for maximum infection control. The table top also resists scratching, staining, chipping and peeling to keep it looking and functioning like new, even after long-term use. The steel base features the lowest profile on the market (1.75") for universal compatibility with patient beds, recliners and seating. An integrated rail allows accessories to be transferred from headwall to table for patient use. Available with standard or custom shaped tops and a variety of base colors and styles.



No drip edge or spill groove



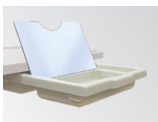
Steel base

## STANDARD FEATURES

- Table Tops: 30" L x 18" W x ¾" T
- No drip edge or spill groove
- Column: height adjustment from 28-44" H hydraulic adjustment with lever handle
- Column includes integrated equipment rail & choice of accessories
- Base: 36" L x 18½" W x 1¾" H | Dark grey steel
- Casters: Standard with lockable 2" twin wheel with quiet operation
- Standard Corian® Colors: Cameo White, Glacier White, Bisque, Bone, Vanilla
- Warranty: 1 year limited; Corian® 10 year limited

## CUSTOMIZATIONS

- Available in all Corian® colors
- Customizable tops and shapes available
- Vanity tray with mirror
- Storage basket
- Urinal Hook



## STANDARD TABLE TOP STYLES



FOTS - Straight



FOTC - Curved

## STANDARD TABLE TOP EDGES



Radius Edge



Bevel Edge

## BASE STYLES & COLORS



U-Base



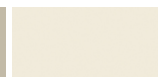
H-Base



Grey



Sand



Linen

For complete product specifications, visit [futrus.com](http://futrus.com).

All Corian® solid surface colors and thicknesses carry the highest "interior finishes" rating. Corian® is:

- Class I (Class A) fire rated
- GREENGUARD Gold for children and schools
- GREENGUARD Indoor Air Quality Certified®
- GREENGUARD listed for Microbial resistance

**FUTRUS**  
SOLUTIONS WITH CORIAN® DESIGN

[futrus.com](http://futrus.com)  
[info@futrus.com](mailto:info@futrus.com)  
1.877.FUTRUS1 (388.7871)



FUTRUS<sup>®</sup> CONTOUR OVERBED TABLE

# FUTRUS® CONTOUR OVERBED TABLE



Designed for maximum infection control, durability and long term value.

The customizable, no drip table top is made entirely of seamless Corian®, which is GREENGUARD® certified to resist microbial growth to help reduce HAIs. Table top surfaces resist chipping, peeling, scratching and staining for greater life-cycle. The low-profile U-base is compatible with patient beds, stretchers, mobile recliners and wheelchairs. The pneumatic cylinder provides infinite height adjustment within a height range of 29.5" to 44.5". A high impact polystyrene shroud conceals and protects the base and lockable casters. Storage options available.



No drip edge



High impact cover

## STANDARD FEATURES

- Table Tops: 30"L x 18"W x ¾"T | No drip edge
- Column: 29½-44½"H Anodized aluminum extrusion with non-handed lever adjustment
- Base: 14-gauge steel base with formed, high impact black or gray cover
- Casters: Standard with 2" twin wheel with quiet operation
- Standard Corian® Colors: Cameo White, Glacier White, Bisque, Bone, Vanilla
- Warranty: 1 year limited; Corian® 10 year limited

## CUSTOMIZATIONS

- Available in all Corian® colors
- Customizable tops and shapes available
- Dual Sided undermount vanity storage with mirrors

## STANDARD TABLE TOP STYLES

- GFOT - Straight
- GFOT\_CS - Straight w/Charting Surface
- GFOTR - Straight w/Rounded Front
- GFOTR\_CS - Straight w/Rounded Front & Charting Surface

For complete product specifications, visit [futrus.com](http://futrus.com).

All Corian® solid surface colors and thicknesses carry the highest "interior finishes" rating. Corian® is:

- Class I (Class A) fire rated
- GREENGUARD Gold for children and schools
- GREENGUARD Indoor Air Quality Certified®
- GREENGUARD listed for Microbial resistance

**FUTRUS®**  
SOLUTIONS WITH CORIAN® DESIGN

[futrus.com](http://futrus.com)  
[info@futrus.com](mailto:info@futrus.com)  
1.877.FUTRUS1 (388.7871)



FUTRUS<sup>®</sup> BEDSIDE CABINET

# FUTRUS® BEDSIDE CABINET



Designed for unrivaled hygiene and durability.

All interior and exterior surfaces are made from seamless, bleach cleanable Corian®, which is GREENGUARD® certified to resist microbial growth to help reduce HAIs. Corian® surfaces also resist chipping, peeling, scratching and staining and combine with Futrus® patented construction techniques for unrivaled durability.

Features include spill-proof edge, soft close drawers and optional wireless charging. Customizable to meet any space, caregiver or patient requirement.



No drip edge



Rear bumper



Dual locking front cast-

## STANDARD FEATURES

- Cabinets measure: 18½"W x 19½"D x 30"H
- No drip edge, vented back with rear bumper to protect walls
- Drawers with self-closing drawer slides
- Mounting: Choice of stationary with furniture glides or dual wheel 3¾" swivel casters, 2 locking
- Standard Corian® Colors: Cameo White, Glacier White, Bisque, Bone, Vanilla
- Warranty: 5 year limited; Corian® 10 year limited

## CUSTOMIZATIONS

- Available in all Corian® colors
- Optional features: Drawer locks, drawer liners, universal mounted storage box, selection of hardware
- Technology: Corian® Wireless Charging

## STANDARD STYLES

- 1 Drawer - open cabinet
- 1 Drawer, 1 Door
- 3 Drawers

## STANDARD MOUNTING

- Furniture Glides
- Locking Casters

For complete product specifications, visit [futrus.com](http://futrus.com).

All Corian® solid surface colors and thicknesses carry the highest "interior finishes" rating. Corian® is:

- Class I (Class A) fire rated
- GREENGUARD Gold for children and schools
- GREENGUARD Indoor Air Quality Certified®
- GREENGUARD listed for Microbial resistance

**FUTRUS®**  
SOLUTIONS WITH CORIAN® DESIGN

[futrus.com](http://futrus.com)  
[info@futrus.com](mailto:info@futrus.com)  
1.877.FUTRUS1 (388.7871)



FUTRUS<sup>®</sup> HYBRID BEDSIDE CABINET

designed with

**CORIAN**<sup>®</sup>  
SOLID SURFACE

# FUTRUS® HYBRID BEDSIDE CABINET



Designed to support infection control and help create a more healing patient environment.

The doors, drawers and top surface are made from seamless, bleach cleanable Corian®, which is GREENGUARD® certified to resist microbial growth to help reduce HAIs. Corian® surfaces also resist chipping, peeling, scratching and staining and combine with Futrus® patented construction techniques for unrivaled durability.

The casing can be specified in a variety of materials to match interior finishes, including bleach cleanable thermofoil and laminate. Customizable to meet any space, caregiver, patient or design requirement.



No drip edge



Radius outside corner



Drawer detail

## STANDARD FEATURES

- Cabinets measure: 18½"W x 19½"D x 30"H
- No drip edge, vented back with rear bumper to protect walls
- Drawers with self-closing drawer slide
- Standard Corian® Colors: Cameo White, Glacier White, Bisque, Bone, Vanilla
- Warranty: 5 year limited; Corian® 10 year limited

## CUSTOMIZATIONS

- Available in over in all Corian® colors
- Thermofoil Colors: Available in a variety of wood grains patterns or solid colors
- Choice of stationary with furniture glides or dual wheel 3¾" swivel casters, 2 locking
- Optional features: Drawer locks, drawer liners, universal mounted storage box, selection of hardware
- Technology: Corian® Wireless Charging

## STANDARD STYLES

- 1 Drawer - open cabinet
- 1 Drawer, 1 Door
- 3 Drawers

## STANDARD MOUNTING

- Furniture Glides
- Locking Casters

For complete product specifications, visit [futrus.com](http://futrus.com).

All Corian® solid surface colors and thicknesses carry the highest "interior finishes" rating. Corian® is:

- Class I (Class A) fire rated
- GREENGUARD Gold for children and schools
- GREENGUARD Indoor Air Quality Certified®
- GREENGUARD listed for Microbial resistance

**FUTRUS®**  
SOLUTIONS WITH CORIAN® DESIGN

[futrus.com](http://futrus.com)  
[info@futrus.com](mailto:info@futrus.com)  
1.877.FUTRUS1 (388.7871)



# FUTRUS® COMMERCIAL CASEWORK SYSTEM



The award winning Futrus® Casework System is designed for unrivaled durability and performance.

All interior and exterior surfaces are made from Corian®, which is seamless, bleach cleanable and nonporous and GREENGUARD® certified to resist the growth of mold and bacteria, for greater cleanability. Corian® surfaces also resist chipping, peeling, scratching and staining and combine with Futrus® patented construction techniques for unrivaled durability.

This unique, modular system is fully adaptable by size, configuration, color and hardware to complement any space or design scheme. Features include soft close drawers and doors. Ideal for demanding environments including high-moisture areas and exterior settings.

## STANDARD FEATURES

- Patented structural construction
- Doors, drawers and case built with Corian® solid surface
- Installation: Horizontal rail mount, wall mounted or traditionally floor mounted on platforms
- Matte finish
- Door Style: Standard Square with soft close hinges
- Drawer Boxes: Corian®; powder coated metal or stainless steel with tab or arch pulls; soft close drawer slides
- Shelves: Adjustable shelves made of Corian®; heavy duty shelf clips
- Futrus® 5 year warranty, Corian® 10 year warranty

## CUSTOMIZATIONS

- Available in all Corian® colors
- Optional features: Drawer locks, selection of hardware
- Cabinet interiors: Coved, sealed
- Radius corners and edges
- Integrated door vents

## COLORS

Standard Corian® Colors:

Cameo White, Glacier White, Bisque, Bone, Vanilla or choice of additional Corian® colors

## INTEGRATES WITH OTHER SOLUTIONS

Futrus® Wall System  
Custom Futrus® Sinks/Corian® Sinks  
Futrus® Sink Modules  
Cove Splashes

## FUTRUS® DOOR DETAILS

Solid Corian® Doors available up to 96"H

Door Fronts:

Standard | Style 132

Cove Edge | Style 150

Glass Insert | Style 140

Door Interiors:

Square | Style 133

Coved | Style 155

For complete product specifications, visit [futrus.com](http://futrus.com).

All Corian® solid surface colors and thicknesses carry the highest "interior finishes" rating. Corian® is:

- Class I (Class A) fire rated
- GREENGUARD Gold for children and schools
- GREENGUARD Indoor Air Quality Certified®
- GREENGUARD listed for Microbial resistance

**FUTRUS**  
SOLUTIONS WITH CORIAN® DESIGN

[futrus.com](http://futrus.com)  
[info@futrus.com](mailto:info@futrus.com)  
1.877.FUTRUS1 (388.7871)





Designed to provide greater durability, design flexibility and long term value compared with traditional casework.

The cabinet doors, drawers and work surface are made from Corian® which resists chipping, peeling, scratching and staining and combine with Futrus® patented construction techniques for unrivaled durability. Corian® surfaces are also seamless, bleach cleanable, nonporous and GREENGUARD® certified to resist the growth of mold and bacteria for greater hygiene. The cabinet case can be specified in a variety of materials including bleach cleanable thermofoil, metal or laminate.

This unique, modular system is fully adaptable by size, configuration color, hardware and materials to complement any space or design scheme. Features include soft close doors and drawers. Ideal for high-use corporate, hospitality, retail and higher education environments.

## STANDARD FEATURES

- Patented structural construction
- Case wrapped with thermofoil or laminate
- Doors, drawers built with Corian®
- Installation: Horizontal rail mount, wall mounted or traditionally floor mounted on platforms
- Corian® fabricated in a matte finish
- Door Style: Standard Square with soft close hinges
- Drawer Boxes: Corian®; powder coated metal or stainless steel with tab or arch pulls; soft close drawer slides
- Shelves: Adjustable shelves made of Corian® or p-lam; heavy duty shelf clips
- Futrus® 5 year warranty, Corian® 10 year warranty

## CUSTOMIZATIONS

- Available in all Corian® colors
- Optional features: Drawer locks, drawer liners, universal mounted storage box, selection of hardware
- Radius corners and edges

## COLORS

Standard Corian® Colors:

Cameo White, Glacier White, Bisque, Bone, Vanilla or choice of additional Corian® colors

## INTEGRATES WITH OTHER SOLUTIONS

Futrus® Wall System

Custom Futrus® Sinks/Corian® Sinks

Cove Splashes

## FUTRUS® DOOR DETAILS

Solid Corian® Doors available up to 96"H

Door Fronts:

Standard | Style 132

Cove Edge | Style 150

Glass Insert | Style 140

Door Interiors:

Square | Style 133

Coved | Style 155

For complete product specifications, visit [futrus.com](http://futrus.com).

**FUTRUS®**  
SOLUTIONS WITH CORIAN® DESIGN

All Corian® solid surface colors and thicknesses carry the highest "interior finishes" rating. Corian® is:

- Class I (Class A) fire rated
- GREENGUARD Gold for children and schools
- GREENGUARD Indoor Air Quality Certified®
- GREENGUARD listed for Microbial resistance

[futrus.com](http://futrus.com)  
[info@futrus.com](mailto:info@futrus.com)  
1.877.FUTRUS1 (388.7871)



# FUTRUS® VIVO TERRAZZO COLLECTION

A unique range of commercial furniture made with Corian® Terrazzo. Inspired by timeless geometric shapes and designed for durability and low-maintenance in high-use environments. Available in a choice of Corian® Terrazzo colors, furniture sizes, base options and metallic finishes.

## PARSONS TABLES

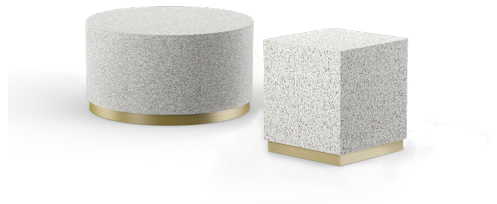


A streamlined, multi-use table designed for unrivaled durability and adaptability. Available in a variety of Corian® Terrazzo and standard Corian® color combinations, sizes, accessory and technology options including seamless wireless charging and power outlets.

Features Futrus® patented construction techniques for maximum impact resistance.

- Range of sizes
- Bleach cleanable, seamless & nonporous table top
- Resists scratching, staining, chipping & impacts
- Corian® is NSF/ANSI Standard 51 certified for food contact
- Optional seamless wireless charging or technology integration
- Suitable for indoor & outdoor use

## CIRKO & KUBI OCCASIONAL TABLES



A streamlined, multi-use table designed for unrivaled durability and adaptability. Available in a variety of Corian® Terrazzo and standard Corian® color combinations, sizes and metallic base trim finishes.

- Range of sizes
- Bleach cleanable, seamless & nonporous table top
- Resists scratching, staining, chipping & impacts
- Optional seamless wireless charging or technology integration
- Suitable for indoor & outdoor use

## TWINZ CAFE TABLES



Allows the seamless combining of two Corian® Terrazzo or standard Corian® colors to create a single table top. Available in a variety of table top sizes, edge treatments and a choice of exclusive base styles and finish options.

- Range of sizes
- Bleach cleanable, seamless & nonporous table top
- Resists scratching, staining, chipping & impacts
- Corian® is NSF/ANSI Standard 51 certified for food contact
- Optional seamless wireless charging
- Suitable for indoor & outdoor use

## CLIF BENCH



Featuring a waterfall edge that is elegantly counter balanced with a cylindrical base. Available in Corian® Terrazzo and standard Corian® color combinations, a range of sizes and optional integrated power outlets. Features Futrus® patented construction techniques for maximum impact resistance.

- Range of sizes
- Bleach cleanable, seamless & nonporous table top
- Resists scratching, staining, chipping & impacts
- Optional power outlet integration
- Suitable for indoor & outdoor use

For complete product specifications, visit [futrus.com](http://futrus.com).

All Corian® solid surface colors and thicknesses carry the highest "interior finishes" rating, Class I (Class A) of the principle USA building codes.

- Class I (Class A) fire rated
- NSF/ANSI 51 Certified to the highest level, for food contact, for all food types
- GREENGUARD Gold for children and schools
- GREENGUARD Indoor Air Quality Certified®
- GREENGUARD listed for Microbial resistance

**FUTRUS**  
SOLUTIONS WITH CORIAN® DESIGN

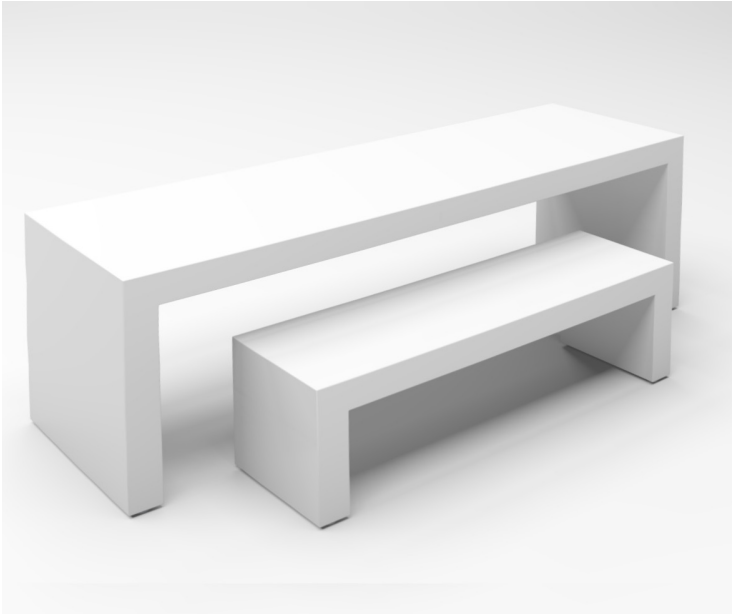
[futrus.com](http://futrus.com)  
[info@futrus.com](mailto:info@futrus.com)  
1.877.FUTRUS1 (388.7871)



FUTRUS<sup>®</sup> ADAPTZ TABLES & BENCHES

# FUTRUS® ADAPTZ TABLES & BENCHES

Designed to be the most adaptable parsons-style furniture on the market.



Tables and benches feature all Corian® surfaces for maximum durability and cleanability. Futrus® patented metal construction provides greater structural stability over traditional millwork techniques and the ability to span up to 10 feet in length without additional support. Seamless Corian® surfaces are food safe certified. Adaptable by size, color, accessories and technology integration.

- All Corian® surfaces
- Patented construction
- Seamless & nonporous
- Bleach cleanable
- Resistant to scratching, staining, chipping & impacts
- Standard & custom sizes
- Available in all Corian® colors
- Technology integration
- NSF/ANSI Standard 51 certified for food contact
- GREENGUARD certified to resist mold & bacteria growth

## STANDARD FEATURES

- Patented construction
- 4" Overall Thickness
- Mounting: Heavy duty leveling feet
- Corian® Colors: Cameo White, Glacier White, Bone, Bisque, Linen, Silver Gray
- Fabricated in a matte finish
- Futrus® 5-year limited warranty, Corian® 10-year limited warranty

## STANDARD TABLE SIZES

Heights: 30", 36", 42"  
Widths: 72", 84", 96", 108", 120"  
Depths: 24", 30", 36", 42"

## STANDARD BENCH SIZES

Heights: 18"  
Widths: 36, 48", 60", 72", 84", 96", 108", 120"  
Depths: 18", 24"

## CUSTOMIZATIONS

- Available in all Corian® colors
- Semi-gloss finish
- Custom sizes available
- Technology Integration: Power; Power/USB Ports; Corian® Wireless Charging
- Optional features: Modesty Panel, Privacy Panels, Casters, Bolt down hardware
- Corian® Quartz table top



Modesty Panels



Privacy Panels



Power/USB



Wireless charging

For custom sizes and designs, contact Futrus®  
For complete product specifications, visit [futrus.com](http://futrus.com).

**FUTRUS®**  
SOLUTIONS WITH CORIAN® DESIGN

All Corian® solid surface colors and thicknesses carry the highest "interior finishes" rating. Corian® Is:

- Class I (Class A) fire rated
- NSF/ANSI 51 Certified to the highest level, for food contact, for all food types
- GREENGUARD Gold for children and schools
- GREENGUARD Indoor Air Quality Certified®
- GREENGUARD listed for Microbial resistance



FUTRUS<sup>®</sup> ADAPTZ HYBRID TABLES & BENCHES

# FUTRUS® ADAPTZ HYBRID TABLES & BENCHES

Designed to be the most adaptable parsons-style furniture on the market.



Tables and benches featuring a Corian® table top and waterfall ends with a choice of laminate or thermofoil underside. Furniture designed to complement new or existing design schemes. Futrus® patented metal construction provides greater structural stability over traditional millwork techniques and the ability to span up to 10 feet in length without additional support. Seamless Corian® surfaces provide unrivaled durability, cleanability and are food safe certified. Adaptable by size, color, accessories and technology integration, including seamless wireless charging.

- Corian® table top
- Patented construction
- Technology integration

Corian® benefits:

- Bleach cleanable
- Seamless & nonporous
- Resistant to scratching, staining, chipping & impacts
- GREENGUARD certified to resist mold & bacteria growth
- NSF/ANSI Standard 51 certified for food contact

## STANDARD FEATURES

- Patented construction
- 4" overall thickness
- Mounting: Heavy duty leveling feet
- Corian® Colors: Cameo White, Glacier White, Bone, Bisque, Linen, Silver Gray
- Corian® fabricated in a matte finish
- Laminate or Thermofoil (3DL) Colors: Cherry, Maple, Walnut
- Futrus® 1-year limited warranty, Corian® 10-year limited warranty

## STANDARD TABLE SIZES

Heights: 30", 36", 42"  
Widths: 72", 84", 96", 108", 120"  
Depths: 24", 30", 36", 42"

## STANDARD BENCH SIZES

Heights: 18"  
Widths: 36", 48", 60", 72", 84", 96", 108", 120"  
Depths: 18", 24"

## CUSTOMIZATIONS

- Available in all Corian® colors
- Corian® fabricated in semi-gloss finish
- Laminate or Thermofoil (3DL) available in additional colors
- Custom sizes available
- Technology Integration: Power; Power/USB Ports; Corian® Wireless Charging
- Optional features: Modesty Panel, Privacy Panels, Casters, Floor attachment hardware



Modesty Panels



Privacy Panels



Power/USB



Wireless charging

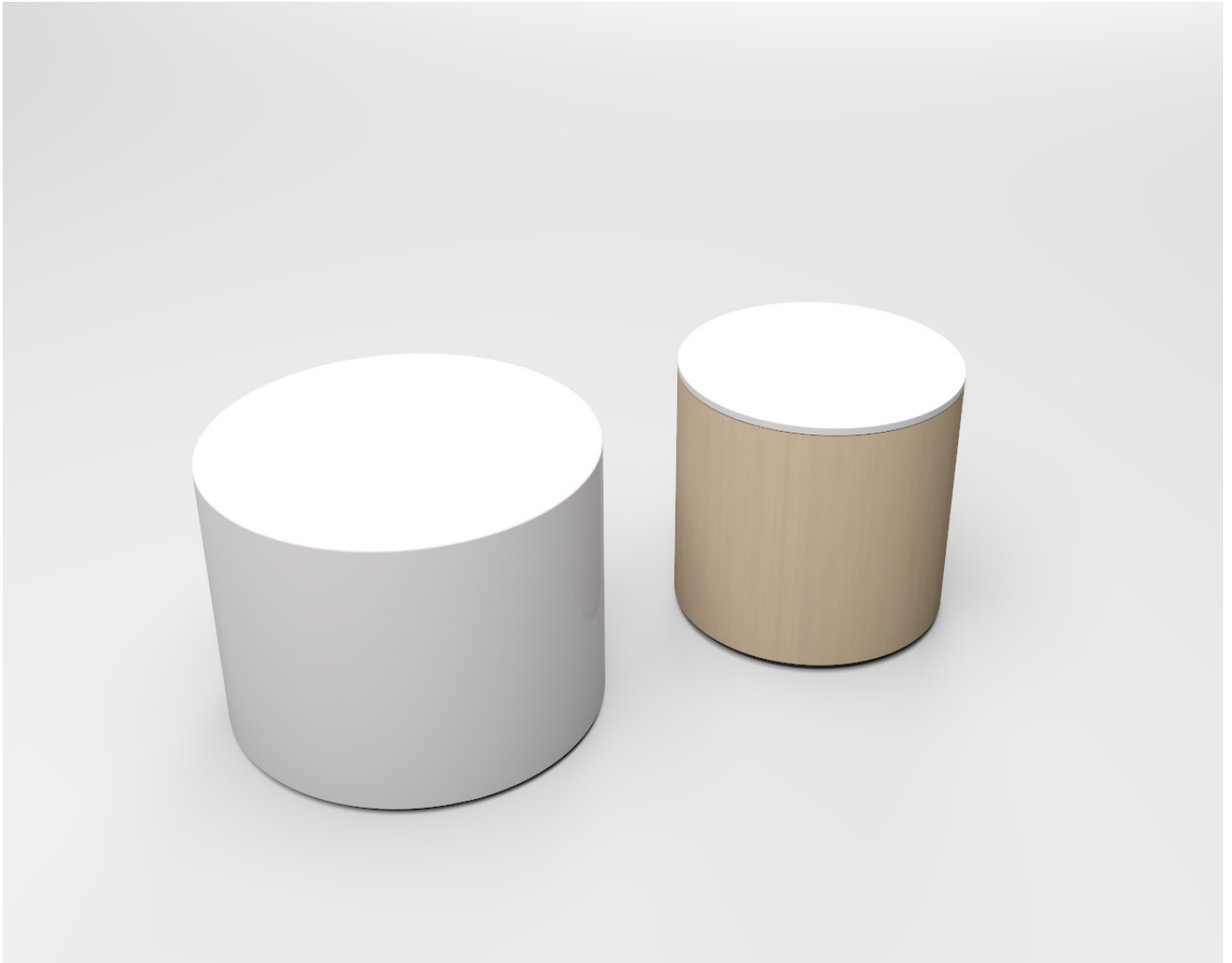
No minimum orders required.

For pricing, custom sizes and designs, contact Futrus®  
For complete product specifications, visit [futrus.com](http://futrus.com).

**FUTRUS®**  
SOLUTIONS WITH CORIAN® DESIGN

All Corian® solid surface colors and thicknesses carry the highest "interior finishes" rating. Corian® Is:

- Class I (Class A) fire rated
- NSF/ANSI 51 Certified to the highest level, for food contact, for all food types
- GREENGUARD Gold for children and schools
- GREENGUARD Indoor Air Quality Certified®
- GREENGUARD listed for Microbial resistance



# FUTRUS® CIRKO TABLES



Futrus® Cirko Occasional Tables offer exceptional durability, hygiene and long-term value. Available in a variety of Corian® and Corian® quartz surfaces, sizes and technology options for even greater functionality. Ideal for both commercial and healthcare environments, including waiting rooms, lobbies, airports and outdoor terraces.

The cylinder shaped tables are available in a variety sizes, colors and finishes with optional technology integration, including seamless wireless charging.

## Design Options & Material Combinations:

- Corian®
- Corian® Hybrid
- Corian®+Quartz
- Quartz Hybrid

## STANDARD SIZES

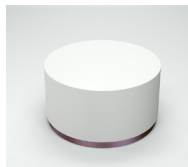
- 12" W/D x 18" H
- 18" W/D x 18" H
- 20" W/D x 18" H
- 24" W/D x 18" H
- 24" W/D x 24" H
- 30" W/D x 18" H
- 36" W/D x 18" H

## STANDARD FEATURES

- Corian® Colors: Cameo White, Glacier White, Bone, Bisque, Linen, Silver Gray
- Quartz Colors: London Sky, Snow White, Stratus White, Coarse Carrara, Concrete Carrara
- Laminate/Thermofoil Colors: Cherry, Maple, Walnut
- Plinth, gray base
- Furniture glides for easy movement
- Futrus® 5-year limited, Corian® 10-year limited

## CUSTOMIZATIONS

- Raised plinth with metal trim options
- Byrne or ECA power/USB outlets
- Wireless charging surface
- Concealed casters
- Multiple Corian® color combinations
- All Corian® and Corian® Quartz colors



Raised plinth



Power/USB



Wireless Charging

## CORIAN® TABLES FEATURE

- Seamless Corian® construction



## CORIAN® HYBRID TABLES FEATURE

- Corian® table top
- Laminate or thermofoil (3DL) sides



## CORIAN®+QUARTZ TABLES FEATURE

- Seamless construction
- Quartz table top
- Corian® sides



## QUARTZ HYBRID TABLES FEATURE

- Quartz table top
- Laminate or thermofoil (3DL) sides



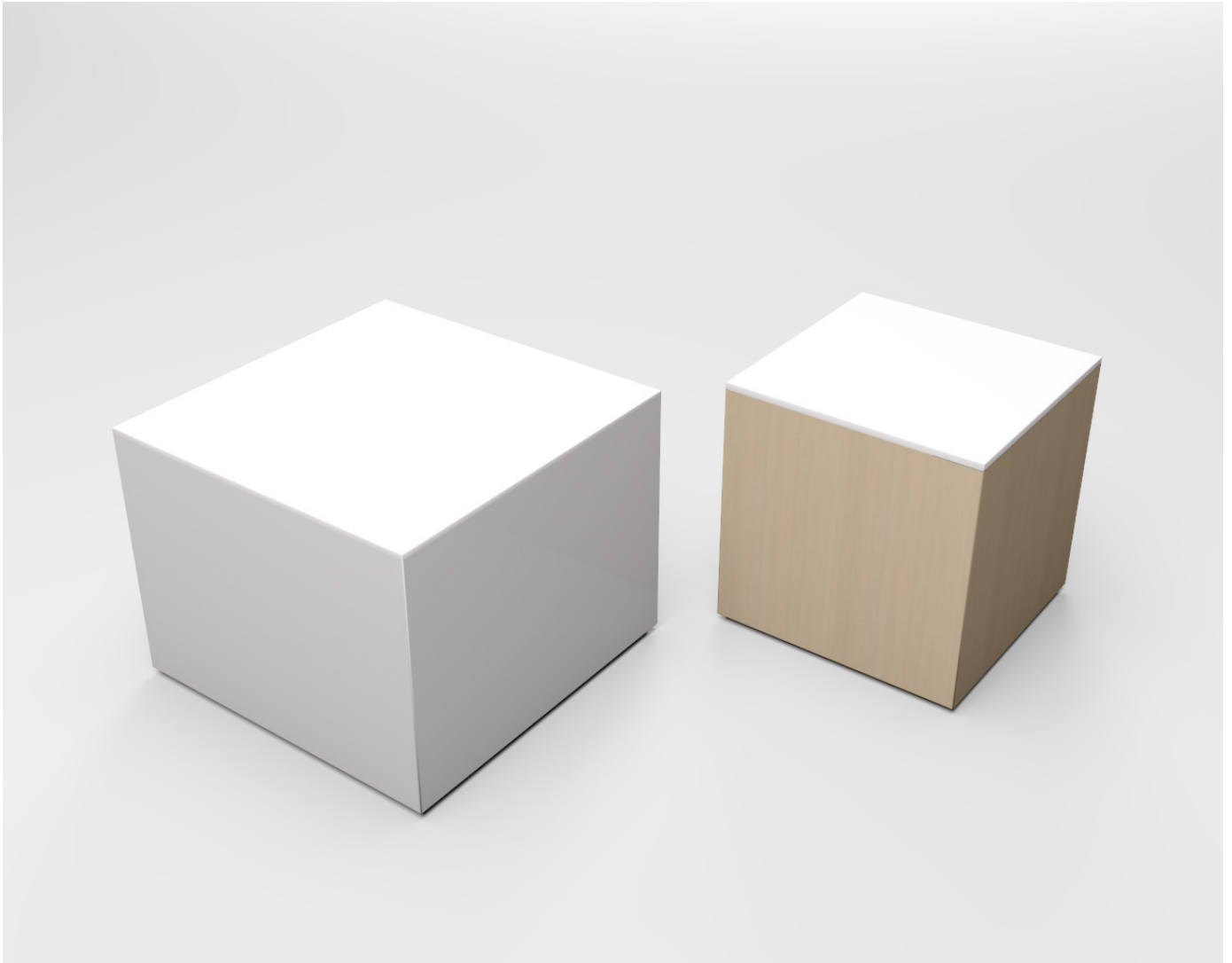
For complete product specifications, visit [futrus.com](http://futrus.com).

All Corian® solid surface colors and thicknesses carry the highest "interior finishes" rating, Class I (Class A) of the principle USA building codes.

- Class I (Class A) fire rated
- NSF/ANSI 51 Certified to the highest level, for food contact, for all food types
- GREENGUARD Gold for children and schools
- GREENGUARD Indoor Air Quality Certified®
- GREENGUARD listed for Microbial resistance

**FUTRUS®**  
SOLUTIONS WITH CORIAN® DESIGN

[futrus.com](http://futrus.com)  
[info@futrus.com](mailto:info@futrus.com)  
1.877.FUTRUS1 (388.7871)



# FUTRUS® KUBI TABLES



Futrus® Kubi Occasional Tables offer exceptional durability, hygiene and long-term value. Available in a variety of Corian® and Corian® quartz surfaces, sizes and technology options for even greater functionality. Ideal for both commercial and healthcare environments, including waiting rooms, lobbies, airports and outdoor terraces.

Available in a variety sizes, colors and finishes with optional technology integration, including seamless wireless charging.

## Design Options & Material Combinations:

- Corian®
- Corian® Hybrid
- Corian®+Quartz
- Quartz Hybrid

## STANDARD SIZES

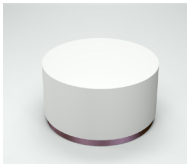
- 12" W/D x 18" H
- 18" W/D x 18" H
- 20" W/D x 18" H
- 24" W/D x 18" H
- 24" W/D x 24" H
- 30" W/D x 18" H
- 36" W/D x 18" H

## STANDARD FEATURES

- Corian® Colors: Cameo White, Glacier White, Bone, Bisque, Linen, Silver Gray
- Quartz Colors: London Sky, Snow White, Stratus White, Coarse Carrara, Concrete Carrara
- Laminate/Thermofoil Colors: Cherry, Maple, Walnut
- Plinth, gray base
- Furniture glides for easy movement
- Futrus® 5-year limited, Corian® 10-year limited

## CUSTOMIZATIONS

- Raised plinth with metal trim options
- Byrne or ECA power/USB outlets
- Wireless charging surface
- Concealed casters
- Multiple Corian® color combinations
- All Corian® and Corian® Quartz colors



Raised plinth



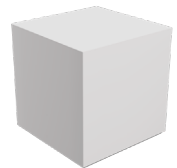
Power/USB



Wireless Charging

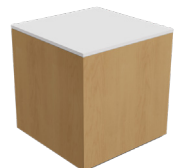
## CORIAN® TABLES FEATURE

- Seamless Corian® construction



## CORIAN® HYBRID TABLES FEATURE

- Corian® table top
- Laminate or thermofoil (3DL) sides



## CORIAN®+QUARTZ TABLES FEATURE

- Seamless construction
- Quartz table top
- Corian® sides



## QUARTZ HYBRID TABLES FEATURE

- Quartz table top
- Laminate or thermofoil (3DL) sides



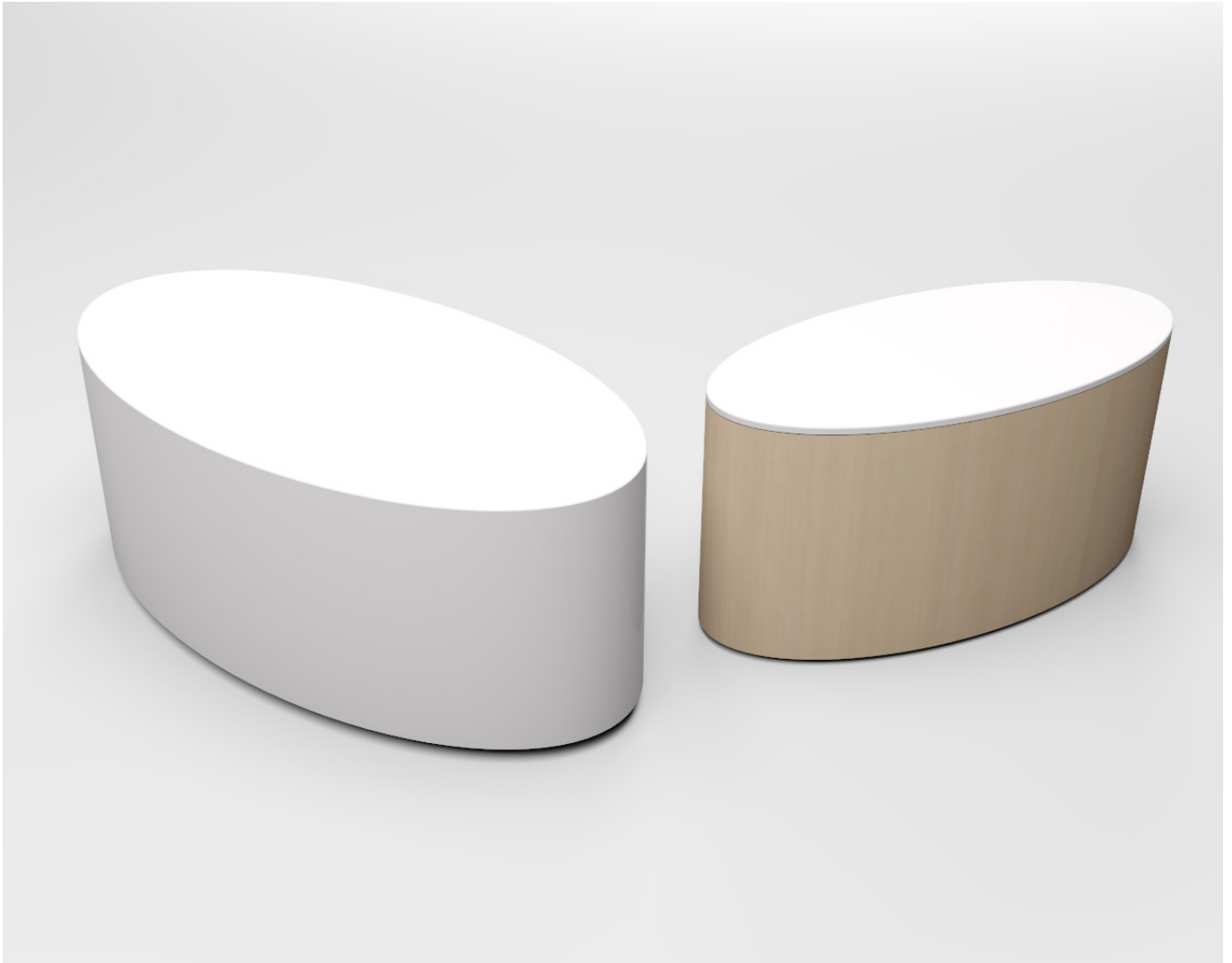
For custom shapes, sizes and designs, contact Futrus®  
For complete product specifications, visit [futrus.com](http://futrus.com).

**FUTRUS®**  
SOLUTIONS WITH CORIAN® DESIGN

All Corian® solid surface colors and thicknesses carry the highest "interior finishes" rating, Class I (Class A) of the principle USA building codes.

- Class I (Class A) fire rated
- NSF/ANSI 51 Certified to the highest level, for food contact, for all food types
- GREENGUARD Gold for children and schools
- GREENGUARD Indoor Air Quality Certified®
- GREENGUARD listed for Microbial resistance

[futrus.com](http://futrus.com)  
[info@futrus.com](mailto:info@futrus.com)  
1.877.FUTRUS1 (388.7871)



# FUTRUS® ELIPZ TABLES



Futrus® Elipz Occasional Tables offer exceptional durability, hygiene and long-term value. Available in a variety of Corian® and Corian® quartz surfaces, sizes and technology options for even greater functionality. Ideal for both commercial and healthcare environments, including waiting rooms, lobbies, airports and outdoor terraces.

The elongated oval shaped table is available in a variety sizes, colors and finishes with optional technology integration, including seamless wireless charging.

## Design Options & Material Combinations:

- Corian®
- Corian® Hybrid
- Corian®+Quartz
- Quartz Hybrid

## STANDARD SIZES

30" W x 22" D x 18" H

36" W x 18" D x 20" H

40" W x 24" D x 18" H

48" W x 24" D x 20" H

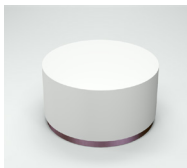
60" W x 24" D x 18" H

## STANDARD FEATURES

- Corian® Colors: Cameo White, Glacier White, Bone, Bisque, Linen, Silver Gray
- Quartz Colors: London Sky, Snow White, Stratus White, Coarse Carrara, Concrete Carrara
- Laminate/Thermofoil Colors: Cherry, Maple, Walnut
- Plinth, gray base
- Furniture glides for easy movement
- Futrus® 5-year limited, Corian® 10-year limited

## CUSTOMIZATIONS

- Raised plinth with metal trim options
- Byrne or ECA power/USB outlets
- Wireless charging surface
- Concealed casters
- Multiple Corian® color combinations
- All Corian® and Corian® Quartz colors



Raised plinth



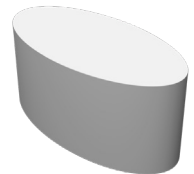
Power/USB



Wireless Charging

## CORIAN® TABLES FEATURE

- Seamless Corian® construction



## CORIAN® HYBRID TABLES FEATURE

- Corian® table top
- Laminate or thermofoil (3DL) sides



## CORIAN®+QUARTZ TABLES FEATURE

- Seamless construction
- Quartz table top
- Corian® sides



## QUARTZ HYBRID TABLES FEATURE

- Quartz table top
- Laminate or thermofoil (3DL) sides



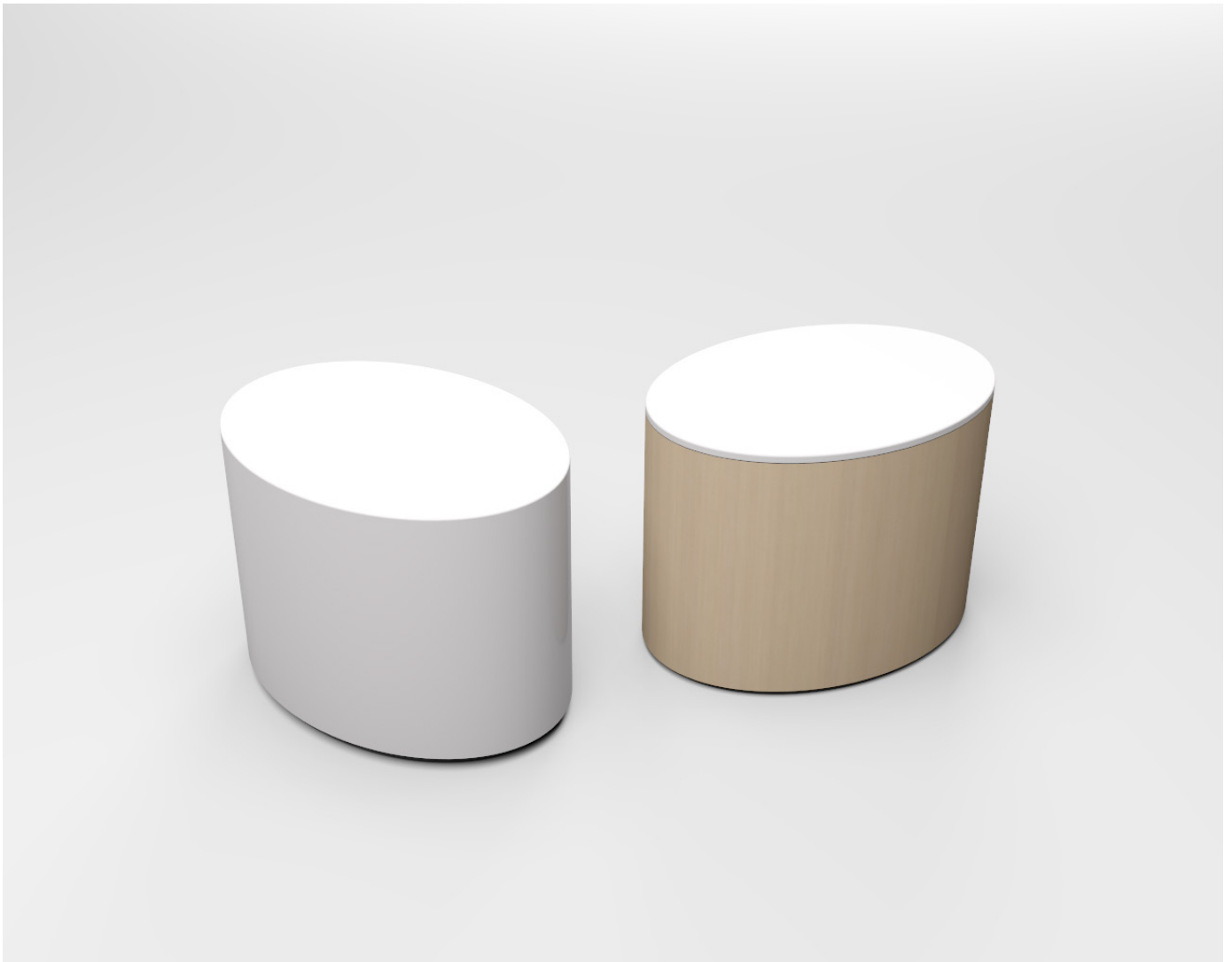
For complete product specifications, visit [futrus.com](http://futrus.com).

All Corian® solid surface colors and thicknesses carry the highest "interior finishes" rating, Class I (Class A) of the principle USA building codes.

- Class I (Class A) fire rated
- NSF/ANSI 51 Certified to the highest level, for food contact, for all food types
- GREENGUARD Gold for children and schools
- GREENGUARD Indoor Air Quality Certified®
- GREENGUARD listed for Microbial resistance

**FUTRUS®**  
SOLUTIONS WITH CORIAN® DESIGN

[futrus.com](http://futrus.com)  
[info@futrus.com](mailto:info@futrus.com)  
1.877.FUTRUS1 (388.7871)



# FUTRUS® OVEE TABLES



Futrus® Ovee Occasional Tables offer exceptional durability, hygiene and long-term value. Available in a variety of Corian® and Corian® quartz surfaces, sizes and technology options for even greater functionality. Ideal for both commercial and healthcare environments, including waiting rooms, lobbies, airports and outdoor terraces.

The oval shaped table is available in a variety sizes, colors and finishes with optional technology integration, including seamless wireless charging.

## Design Options & Material Combinations:

- Corian®
- Corian® Hybrid
- Corian®+Quartz
- Quartz Hybrid

## STANDARD SIZES

18"W x 13½"D x 18"H

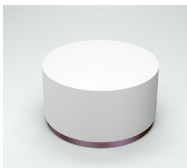
24"W x 18"D x 18"H

## STANDARD FEATURES

- Corian® Colors: Cameo White, Glacier White, Bone, Bisque, Linen, Silver Gray
- Quartz Colors: London Sky, Snow White, Stratus White, Coarse Carrara, Concrete Carrara
- Laminate/Thermofoil Colors: Cherry, Maple, Walnut
- Plinth, gray base
- Furniture glides for easy movement
- Futrus® 5-year limited, Corian® 10-year limited

## CUSTOMIZATIONS

- Raised plinth with metal trim options
- Byrne or ECA power/USB outlets
- Wireless charging surface
- Concealed casters
- Multiple Corian® color combinations
- All Corian® and Corian® Quartz colors



Raised plinth



Power/USB



Wireless Charging

## CORIAN® TABLES FEATURE

- Seamless Corian® construction



## CORIAN® HYBRID TABLES FEATURE

- Corian® table top
- Laminate or thermofoil (3DL) sides



## CORIAN® + QUARTZ TABLES FEATURE

- Seamless construction
- Quartz table top
- Corian® sides



## QUARTZ HYBRID TABLES FEATURE

- Quartz table top
- Laminate or thermofoil (3DL) sides



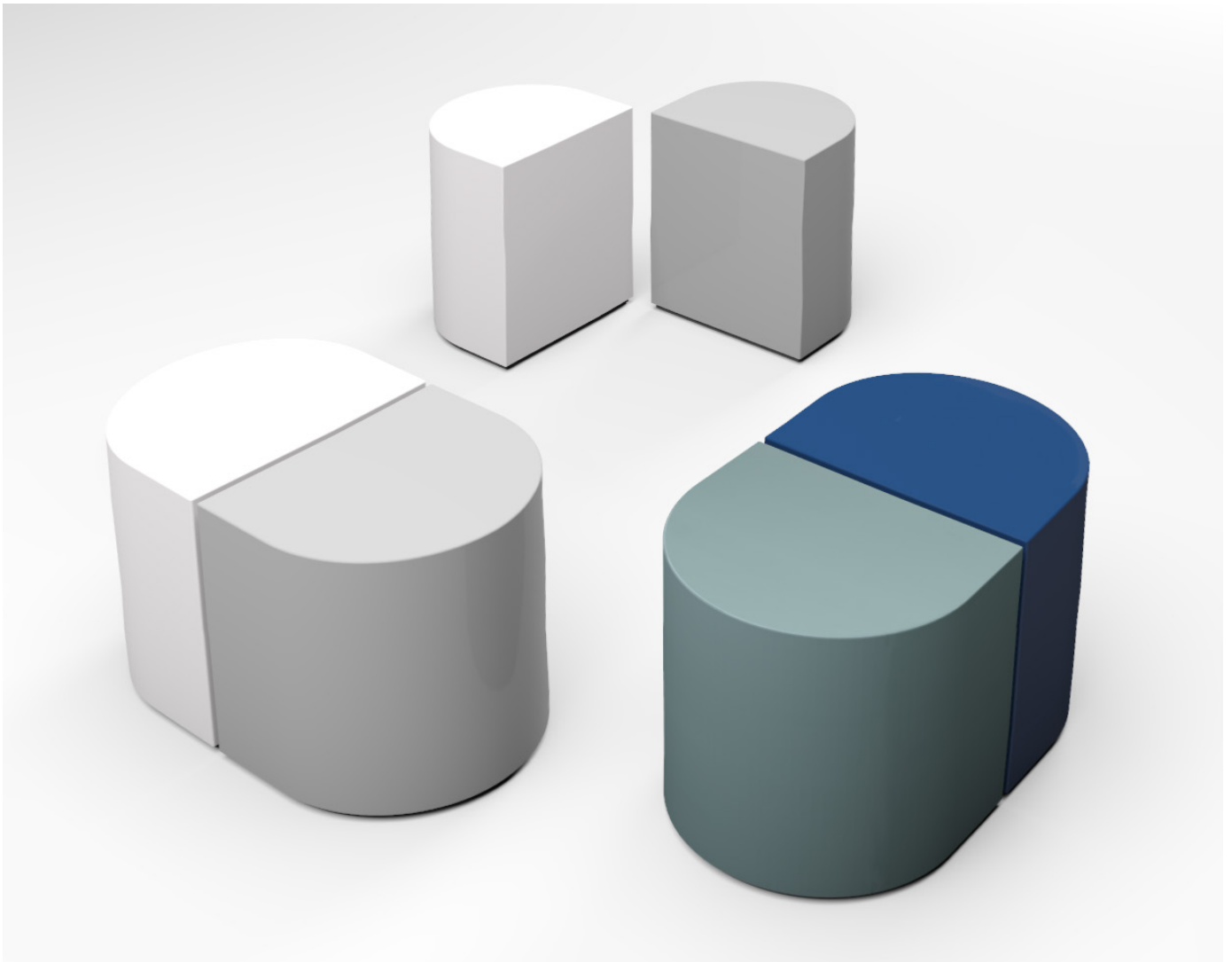
For complete product specifications, visit [futrus.com](http://futrus.com).

All Corian® solid surface colors and thicknesses carry the highest "interior finishes" rating, Class I (Class A) of the principle USA building codes.

- Class I (Class A) fire rated
- NSF/ANSI 51 Certified to the highest level, for food contact, for all food types
- GREENGUARD Gold for children and schools
- GREENGUARD Indoor Air Quality Certified®
- GREENGUARD listed for Microbial resistance

**FUTRUS®**  
SOLUTIONS WITH CORIAN® DESIGN

[futrus.com](http://futrus.com)  
[info@futrus.com](mailto:info@futrus.com)  
1.877.FUTRUS1 (388.7871)



# FUTRUS® DEEDEE TABLES



Featuring two matching D-Shaped occasional tables that combine to form a single table or separate for greater versatility. Each D-shaped table is available in matching or contrasting Corian colors for greater design flexibility.

- Made with Corian®
- Available in a variety of Corian® colors
- Bleach cleanable, seamless & nonporous
- Low-maintenance
- Resists scratching, staining, chipping & impacts
- Suitable for indoor & outdoor use

## OVERALL SIZE

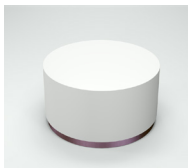
30"W x 15"D x 18"H

## STANDARD FEATURES

- Corian® Colors: Cameo White, Glacier White, Bone, Bisque, Linen, Silver Gray
- Plinth, gray base
- Furniture glides for easy movement
- Futrus® 5-year limited, Corian® 10-year limited

## CUSTOMIZATIONS

- Available in all Corian® colors
- Two separate colors for each table (minimum order may apply)
- Corian® in a semi-gloss finish
- Custom plinth 3" high [table height will remain 18"]
- Advanced technology integration, including power/data grommets [Byrne or ECA Electricals]
- Integration of Corian® Charging Surface



Raised plinth



Power/USB



Wireless Charging

For complete product specifications, visit [futrus.com](https://futrus.com).

All Corian® solid surface colors and thicknesses carry the highest "interior finishes" rating, Class I (Class A) of the principle USA building codes.

- Class I (Class A) fire rated
- NSF/ANSI 51 Certified to the highest level, for food contact, for all food types
- GREENGUARD Gold for children and schools
- GREENGUARD Indoor Air Quality Certified®
- GREENGUARD listed for Microbial resistance

**FUTRUS**  
SOLUTIONS WITH CORIAN® DESIGN

[futrus.com](https://futrus.com)  
[info@futrus.com](mailto:info@futrus.com)  
1.877.FUTRUS1 (388.7871)



# FUTRUS® CAFE TABLES



Futrus® Cafe Tables are designed to provide unrivaled durability, design flexibility, cleanability and long-term value.

The table tops are available in Corian® solid surface or Corian® Quartz and are ideal for indoor or outdoor use. Both Corian® and quartz surfaces are seamless, bleach cleanable, nonporous and NSF/ANSI Standard 51 certified for food contact. Surfaces also resist chipping, peeling, scratching and staining for greater life cycle.

Available in standard or custom shapes, sizes, edge details and all Corian® and Corian® Quartz colors. With optional technology integration, including seamless wireless charging for added functionality. Specifiable as a table top only or complete with base. from a wide choice of style options.

## STANDARD FEATURES

- Seamless Table Tops
- Edge Treatments: Bevel, rounded, eased or knife
- Power coated, stainless or chrome base with floor glides
- 1 year warranty; Corian® 10 year limited warranty
- Table Top only option available
- Colors: Cameo White, Glacier White, Bone, Bisque, Vanilla, Sandstone, Linen
- Sizes:
  - Square Tops: 24", 27", 30", 36", 48"
  - Round Tops: 27", 30", 36", 48"

## CUSTOMIZATIONS

- Available in all Corian® or Corian® Quartz colors
- Custom sizes available
- Semi-gloss finish
- Technology Integration: Power; Power/USB Ports; Corian® Wireless Charging

For custom sizes and designs, contact Futrus®  
For complete product specifications, visit [futrus.com](http://futrus.com).

All Corian® solid surface colors and thicknesses carry the highest "interior finishes" rating. Corian® is:

- Class I (Class A) fire rated
- NSF/ANSI 51 Certified to the highest level, for food contact, for all food types
- GREENGUARD Gold for children and schools
- GREENGUARD Indoor Air Quality Certified®
- GREENGUARD listed for Microbial resistance

**FUTRUS®**  
SOLUTIONS WITH CORIAN® DESIGN

[futrus.com](http://futrus.com)  
[info@futrus.com](mailto:info@futrus.com)  
1.877.FUTRUS1 (388.7871)



FUTRUS<sup>®</sup> SHOWER SYSTEMS & BASES

# FUTRUS® SHOWER SYSTEMS & BASES



Designed to be low maintenance and easy to install.

Shower bases and walls are made from Corian®, which is seamless, bleach cleanable and GREENGUARD certified to resist mold and bacteria, making them ideal for both healthcare and commercial environments. Non-slip Corian® surfaces also resist chipping, peeling, scratching and staining for greater life cycle.

All of our shower bases are Home Innovations Lab Certified™ to meet HUD Bulletin 73a, CSA B45.5/ IAPMO Z124, & ASME A112.19.7/CSA B45.10. These certifications confirm that our shower bases meet or exceed industry testing requirements for durability, cleanability and stain resistance.

Specifiable as base only or as a complete shower system. Featuring integrated Corian® base and walls to eliminate the need for grout. Available in standard or custom sizes, configurations and ADA compliant thresholds.

## STANDARD FEATURES

- Base Size: 30", 36" and 48" widths/depths
- Bases can be specified separately
- Coved corners
- Square or rectangular
- Standard or ADA low threshold
- Wall panels available in 84" and 96" heights
- Slip resistant
- Corian® Colors: Cameo White, Glacier White, Bone, Bisque, Vanilla, Sandstone, Linen
- Futrus® 1-year limited, Corian® 10-year limited warranty

## STANDARD NEOANGLE FEATURES

- Base Sizes: 30", 36", 38" and 42" widths/depths
- Bases can be specified separately
- Coved corners
- Standard or ADA low threshold
- Wall panels available in 84" and 96" heights
- Slip resistant
- Corian® Colors: Cameo White, Glacier White, Bone, Bisque, Vanilla, Sandstone, Linen
- Futrus® 1-year limited, Corian® 10-year limited warranty

## CUSTOMIZATIONS

- Custom sizing available
- Made to order
- Available in all Corian® colors; or combination of colors
- Semi-gloss wall finish helps reduce water spotting
- Optional built in soap/shampoo niche

For complete product specifications, visit [futrus.com](http://futrus.com).

**FUTRUS®**  
SOLUTIONS WITH CORIAN® DESIGN

All Corian® solid surface colors and thicknesses carry the highest "interior finishes" rating. Corian® is:

- Class I (Class A) fire rated
- GREENGUARD Gold for children and schools
- GREENGUARD Indoor Air Quality Certified®
- GREENGUARD listed for Microbial resistance

[futrus.com](http://futrus.com)  
[info@futrus.com](mailto:info@futrus.com)  
1.877.FUTRUS1 (388.7871)



FUTRUS<sup>®</sup> AQUAGUARD TROUGH SINKS

designed with

**CORIAN**<sup>®</sup>  
SOLID SURFACE

# FUTRUS® AQUAGUARD TROUGH SINKS



The Futrus® Aquaguard Trough Sink and Module features a seamlessly integrated sink and countertop, made from 100% Corian®. The graduated basin slope directs water away to reduce splashing. The basin is self-draining and countertop areas can be minimized to prevent water pooling. Non-porous, bleach cleanable Corian® surfaces are highly durable and resist mold and bacteria growth for greater hygiene. The floating design provides a modern, streamlined look and enables easy maintenance.

Modules include a tamperproof plumbing enclosure panel that is specifiable in Corian® or laminate and is removable for easy maintenance. ADA compliant and ideal for commercial or healthcare environments.

- Made with 100% Corian®
- ADA compliant
- Self-draining sloped basin
- Bleach cleanable
- Resists scratching, staining, chipping & impacts
- Corian® is GREENGUARD certified to resist mold & bacteria growth
- Seamless & nonporous
- Easy installation & maintenance

## STANDARD AQUAGUARD TROUGH SINK FEATURES

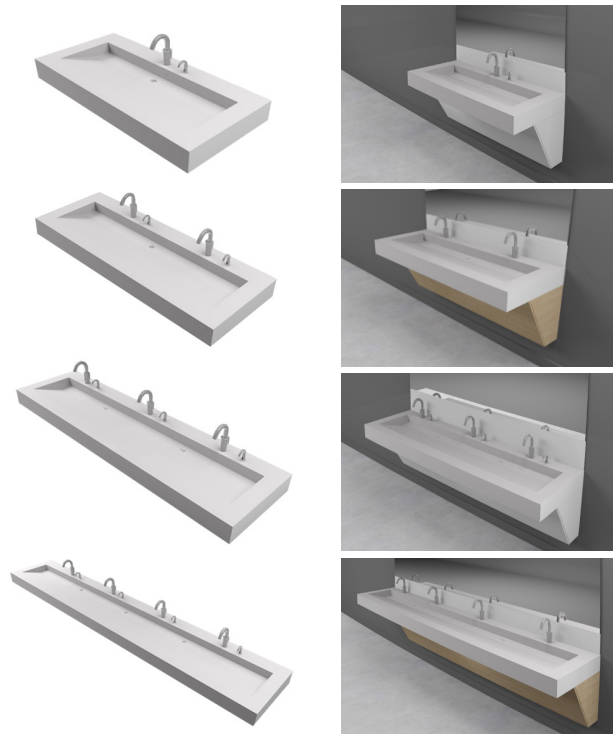
- 1-Station, 2-Station, 3-Station & 4-Station options
- Widths: 5', 6', 7', 8', 9', 10', 11'
- Depths: 22" to 24"
- Apron: 5" tall
- Basin Size: 14" W x 5" D; 22° slope
- Ends: Finished or Unfinished
- 4" detached backsplash
- Faucet and drain cut-outs
- Colors: Cameo White, Glacier White, Bone, Bisque, Vanilla, Sandstone, Linen
- 1 year warranty; Corian® 10 year limited warranty

## STANDARD AQUAGUARD MODULE FEATURES

- Height: 34" overall
- Base: Corian® or Laminate
- Corian® Colors: Cameo White, Glacier White, Bone, Bisque, Vanilla, Sandstone, Linen
- Laminate Colors: Cherry, Maple or Walnut

## CUSTOMIZATIONS

- Available in all Corian® colors and patterns
- Custom sizes available
- Aprons: Additional sizes available
- Cove splash



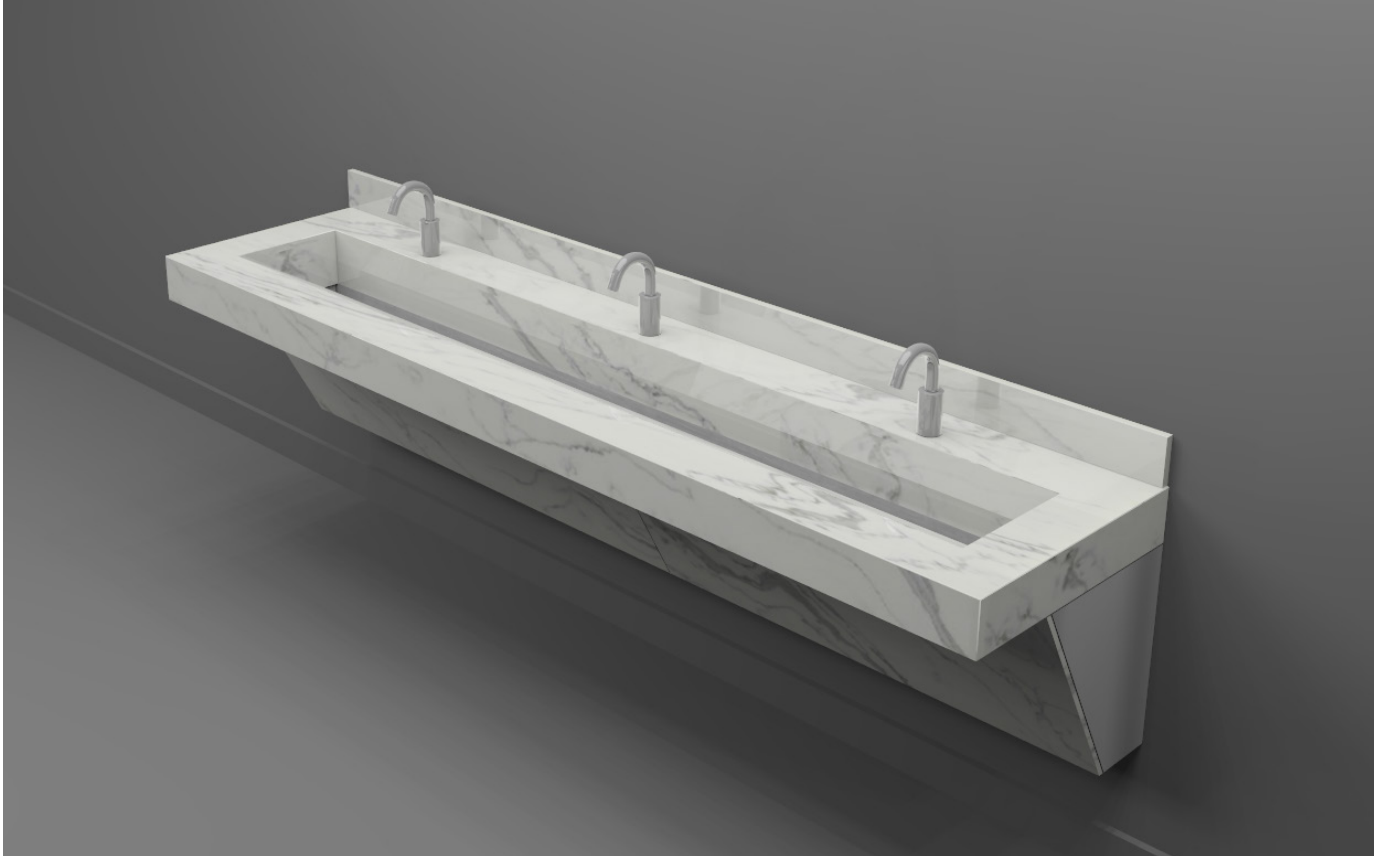
For complete product specifications, visit [futrus.com](http://futrus.com).

All Corian® solid surface colors and thicknesses carry the highest "interior finishes" rating. Corian® is:

- Class I (Class A) fire rated
- GREENGUARD Gold for children and schools
- GREENGUARD Indoor Air Quality Certified®
- GREENGUARD listed for Microbial resistance

**FUTRUS®**  
SOLUTIONS WITH CORIAN® DESIGN

[futrus.com](http://futrus.com)  
[info@futrus.com](mailto:info@futrus.com)  
1.877.FUTRUS1 (388.7871)



FUTRUS<sup>®</sup> NA-TRO TROUGH SINKS

# FUTRUS® NA-TRO TROUGH SINKS



The Futrus® Na-TRO Trough Sink and Na-TRO Sink Module features a seamlessly integrated sink and countertop, made from Corian® Quartz for natural beauty, lasting durability and easy cleanability.

The graduated basin slope directs water away to reduce splashing. Countertop areas can be minimized to prevent water pooling. Non-porous, bleach cleanable Corian® Quartz surfaces are highly durable and resist mold and bacteria growth for greater hygiene. The design provides a modern, streamlined look and enables easy maintenance. Designed for wall-to-wall installation or as a module, all models are ADA compliant and ideal for commercial or healthcare environments.

- Made with Corian® Quartz
- ADA compliant
- Self-draining sloped basin
- Bleach cleanable
- Resists scratching and staining
- Corian® Quartz is GREENGUARD certified
- Nonporous
- Easy installation & maintenance

## STANDARD NA-TRO TROUGH SINK FEATURES

- 1-Station, 2-Station & 3-Station options
- Widths: 5', 6', 7', 8', 9'
- Depths: 23"
- Apron: 4½" tall
- Ends: Unfinished [wall to wall install only]
- Faucet and drain cut-outs
- Corian® Quartz Colors: London Sky, Snow White, Stratus White, Coarse Carrara, Concrete Carrara
- 1 year warranty; Corian® 10 year limited warranty

## STANDARD NA-TRO MODULE FEATURES

- Height: 34" overall
- Base: Corian® Quartz or Laminate
- Ends: Unfinished [wall to wall install] or finished
- Corian® Quartz Colors: London Sky, Snow White, Stratus White, Coarse Carrara, Concrete Carrara
- Laminate Colors: Cherry, Maple or Walnut

## CUSTOMIZATIONS

- Available in all Corian® Quartz colors and patterns
- Custom sizes available [lengths over 9' require multiple sinks]



For complete product specifications, visit [futrus.com](http://futrus.com).

All Corian® Quartz colors and thicknesses are:

- Class I (Class A) fire rated
- GREENGUARD Gold
- GREENGUARD Indoor Air Quality Certified®

**FUTRUS®**  
SOLUTIONS WITH CORIAN® DESIGN

[futrus.com](http://futrus.com)  
[info@futrus.com](mailto:info@futrus.com)  
1.877.FUTRUS1 (388.7871)

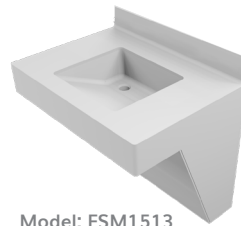


# FUTRUS® SINK MODULES

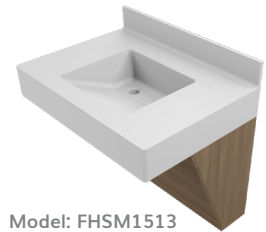


Designed for maximum hygiene, durability and easy installation.

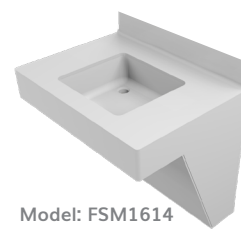
Featuring a range of seamlessly integrated sink shapes made with 100% Corian® and a choice of bleach cleanable Corian®, thermofoil or laminate base. A removable tamperproof panel provides easy plumbing access and a continuous metal wall bracket makes installation simple. ADA compliant and ideal for both healthcare and commercial environments.



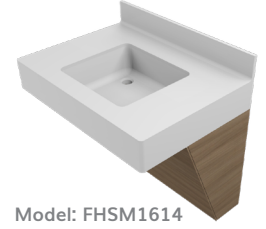
Model: FSM1513



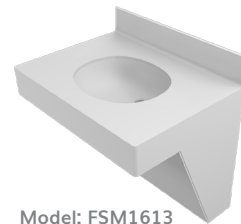
Model: FHSM1513



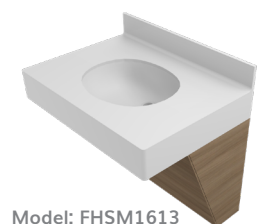
Model: FSM1614



Model: FHSM1614



Model: FSM1613



Model: FHSM1613

## STANDARD FEATURES

- 4" cove backsplash
- Front Apron: Round or square
- Base: Corian® or Hybrid with laminate or thermofoil
- Corian® Colors: Cameo White, Glacier White, Bone, Bisque, Vanilla, Sandstone, Linen
- Futrus® 5-year limited, Corian® 10-year limited

## ANGLEX SINK MODULES - 1513

- Size: 30" W x 21" D x 34" H
- AngleX Sink 15¼" W x 13¾" D x 5¼" Deep
- 5-1/2" front apron
- ADA Sink Anti-splashback rear slope with offset drain and no overflow

## CUBICA SINK MODULES - 1614

- Size: 30" W x 21" D x 34" H
- Cubica Sink 16¼" W x 14¾" D x 5¼" Deep
- 7" front apron
- ADA Sink with offset drain and no overflow

## ELIPTA SINK MODULES - 1613

- Size: 30" W x 21" D x 34" H
- Elipta Sink 16" W x 12-9/16" D x 4-11/16" Deep
- 7" front apron
- ADA Sink with no overflow

## CUSTOMIZATIONS

- Custom sizing and layouts available
- Wall splashes available
- No drip edge
- Self-draining surface
- Available in all Corian® colors

For complete product specifications, visit [futrus.com](http://futrus.com).

All Corian® solid surface colors and thicknesses carry the highest "interior finishes" rating. Corian® is:

- Class I (Class A) fire rated
- GREENGUARD Gold for children and schools
- GREENGUARD Indoor Air Quality Certified®
- GREENGUARD listed for Microbial resistance

**FUTRUS**®  
SOLUTIONS WITH CORIAN® DESIGN

[futrus.com](http://futrus.com)  
[info@futrus.com](mailto:info@futrus.com)  
1.877.FUTRUS1 (388.7871)



FUTRUS<sup>®</sup> ADA COMPLIANT SINKS

# FUTRUS® ADA COMPLIANT SINKS



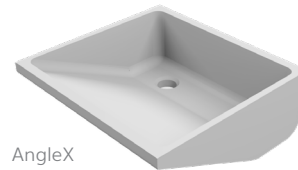
Made from 100% Corian® and designed for unrivaled durability, hygiene and easy maintenance. Each sink is uniquely shaped for greater functionality and seamlessly integrates with Corian® counter tops, for easy cleaning. All Futrus® sinks meet ADA requirements, making them ideal for both healthcare and commercial environments. Available in a variety of Corian® colors.

- Made with 100% Corian®
- Offset or standard drain location
- ADA compliant
- Resists scratching, staining, chipping & impacts
- Corian® is GREENGUARD certified to resist mold and bacteria growth
- Seamless & non-porous
- Bleach cleanable
- Optional overflow integration
- Standard Corian® Colors: Cameo White, Glacier White, Bone, Bisque, Vanilla, Sandstone, Linen
- Futrus® 1-year limited, Corian® 10-year limited warranty

## STANDARD ANGLEX FEATURES

Features a perfectly angled basin to minimize splashing. Also supports low profile and shallow depth counter surfaces.

- Overall Size: 15¼"W x 13¾"D x 5¼" Deep
- ADA Sink with offset drain and no overflow
- Model No: F1513



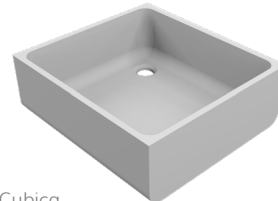
AngleX



## STANDARD CUBICA FEATURES

Ergonomic square design that maximizes front basin area and features coved edges for hygiene and cleanability.

- Overall Size: 16¼"W x 14¾"D x 5¼" Deep
- ADA Sink with offset drain and no overflow
- Model No: F1614



Cubica



## STANDARD ELIPTA FEATURES

Compact oval design with minimal narrow depth to meet ADA requirements.

- Overall Size: 16"W x 13-5/8"D x 3¾" Deep
- No overflow
- Model No: F1613



Elipta



For complete product specifications, visit [futrus.com](http://futrus.com).

All Corian® solid surface colors and thicknesses carry the highest "interior finishes" rating. Corian® is:

- Class I (Class A) fire rated
- GREENGUARD Gold for children and schools
- GREENGUARD Indoor Air Quality Certified®
- GREENGUARD listed for Microbial resistance

**FUTRUS®**  
SOLUTIONS WITH CORIAN® DESIGN

[futrus.com](http://futrus.com)  
[info@futrus.com](mailto:info@futrus.com)  
1.877.FUTRUS1 (388.7871)